

The Genera of Fungi: fixing the application of type species of generic names

Pedro W. Crous^{1,2,3}, Alejandra Giraldo⁴, David L. Hawksworth^{5,6,7}, Vincent Robert¹, Paul M. Kirk^{7,8}, Josep Guarro⁴, Barbara Robbertse⁹, Conrad L. Schoch⁹, Ulrike Damm¹⁰, Thippawan Trakunyingcharoen¹¹, and Johannes Z. Groenewald¹

¹CBS-KNAW Fungal Biodiversity Centre, Uppsalalaan 8, 3584 CT Utrecht, The Netherlands; corresponding author e-mail: p.crous@cbs.knaw.nl

²Microbiology, Department of Biology, Utrecht University, Padualaan 8, 3584 CH Utrecht, The Netherlands

³Wageningen University and Research Centre (WUR), Laboratory of Phytopathology, Droevendaalsesteeg 1, 6708 PB Wageningen, The Netherlands

⁴Unitat de Micologia, Facultat de Medicina i Ciències de la Salut and IISPV, Universitat Rovira i Virgili, Sant Llorenç 21, 43201 Reus, Tarragona, Spain

⁵Departamento de Biología Vegetal II, Facultad de Farmacia, Universidad Complutense de Madrid, Plaza Ramón y Cajal, Madrid 28040, Spain

⁶Department of Life Sciences, The Natural History Museum, Cromwell Road, London SW7 5BD, UK

⁷Mycology Section, Royal Botanic Gardens, Kew, Surrey TW9 3DS, UK

⁸State Key Laboratory of Mycology, Institute of Microbiology, Chinese Academy of Sciences, Beijing 100101, China

⁹National Center for Biotechnology Information, National Library of Medicine, National Institutes of Health, Bethesda, Maryland, USA

¹⁰Senckenberg Museum of Natural History Görlitz, PF 300 154, 02806 Görlitz, Germany

¹¹Department of Entomology and Plant Pathology, Faculty of Agriculture, Chiang Mai University, Chiang Mai 50200, Thailand

Abstract: To ensure a stable platform for fungal taxonomy, it is of paramount importance that the genetic application of generic names be based on their DNA sequence data, and wherever possible, not morphology or ecology alone. To facilitate this process, a new database, accessible at www.GeneraofFungi.org (GoF) was established, which will allow deposition of metadata linked to holo-, lecto-, neo- or epitype specimens, cultures and DNA sequence data of the type species of genera. Although there are presently more than 18 000 fungal genera described, we aim to initially focus on the subset of names that have been placed on the "Without-prejudice List of Protected Generic Names of Fungi" (see *IMA Fungus* 4(2): 381–443, 2013). To enable the global mycological community to keep track of typification events and avoid duplication, special MycoBank Typification identifiers (MBT) will be issued upon deposit of metadata in MycoBank. MycoBank is linked to GoF, thus deposited metadata of generic type species will be displayed in GoF (and *vice versa*), but will also be linked to Index Fungorum (IF) and the curated RefSeq Targeted Loci (RTL) database in GenBank at the National Center for Biotechnology Information (NCBI). This initial paper focuses on eight genera of appendaged coelomycetes, the type species of which are neo- or epitypified here: *Bartalinia* (*Bartalinia robillardoides*, *Amphisphaeriaceae*, *Xylariales*), *Chaetospermum* (*Chaetospermum chaetosporum*, *incertae sedis*, *Sebaciniales*), *Coniella* (*Coniella fragariae*, *Schizoparmaceae*, *Diaporthales*), *Crinitospora* (*Crinitospora pulchra*, *Melanconidaceae*, *Diaporthales*), *Eleutheromyces* (*Eleutheromyces subulatus*, *Helotiales*), *Kellermania* (*Kellermania yuccigena*, *Planistromataceae*, *Botryosphaeriales*), *Mastigosporium* (*Mastigosporium album*, *Helotiales*), and *Mycotribulus* (*Mycotribulus mirabilis*, *Agaricales*). Authors interested in contributing accounts of individual genera to larger multi-authored papers to be published in *IMA Fungus*, should contact the associate editors listed below for the major groups of fungi on the List of Protected Generic Names for Fungi.

Key words:

DNA Barcodes
fungal systematic
ITS
LSU
typification
www.GeneraofFungi.org

Article info: Submitted: 15 April 2014; Accepted: 6 June 2014; Published: 19 June 2014.

INTRODUCTION

In *The Genera of Fungi*, Clements & Shear (1931) summarised the mycological information available at that time to provide a classification of all genera of fungi (kingdom *Fungi*, including lichen-forming fungi, and also *Oomycota*). In the process, they selected type species for many genera in which no type

was designated, thus attempting to fix the application of all generic names. Since that historic publication, mycology as a discipline has advanced rapidly, with the first DNA sequence data becoming available in GenBank around 1991 (Hibbett *et al.* 2011). Taylor *et al.* (2000) proposed the Genealogical Concordance Phylogenetic Species Recognition concept to delimit fungal species by utilising characters from multiple

© 2014 International Mycological Association

You are free to share - to copy, distribute and transmit the work, under the following conditions:

Attribution: You must attribute the work in the manner specified by the author or licensor (but not in any way that suggests that they endorse you or your use of the work).

Non-commercial: You may not use this work for commercial purposes.

No derivative works: You may not alter, transform, or build upon this work.

For any reuse or distribution, you must make clear to others the license terms of this work, which can be found at <http://creativecommons.org/licenses/by-nc-nd/3.0/legalcode>. Any of the above conditions can be waived if you get permission from the copyright holder. Nothing in this license impairs or restricts the author's moral rights.

independent loci. This still provides the benchmark for phylogenetic species delimitation in mycology. However, less precise methods were needed in order to address the challenge to document all life on the planet in a reasonable time frame. The possibility for rapid specimen identification and species discovery by means of their DNA sequence data gained extra momentum when Hebert *et al.* (2003) introduced the concept of DNA Barcoding. This aims to use a single, variable stretch of DNA (DNA barcode) to identify all eukaryotic life on Earth. Although it soon became clear that the mitochondrial gene *CO1* was unsuitable as a universal DNA barcode for fungi, the fungal community addressed the situation by adopting the widely used internal transcribed spacer (ITS) region of the nuclear ribosomal DNA as the Fungal DNA barcode (Schoch *et al.* 2012). This marker had a 73 % probability to correctly identify a fungal species screened, which was comparable to the two barcode markers for plants. Nevertheless further research to propose additional barcodes that will distinguish species with better resolution are already well advanced (Schmitt *et al.* 2009, Quaedvlieg *et al.* 2012, Gryganskyi *et al.* 2013, Tretter *et al.* 2013).

Other changes effecting fungal nomenclature include the launching of MycoBank to provide unique identifiers for each taxonomic change and novelty on a global scale (Crous *et al.* 2004), as well as the publication of the “Amsterdam Declaration on Fungal Nomenclature” (Hawksworth *et al.* 2011) to suggest changes to the subsequently renamed *International Code of Nomenclature for algae, fungi, and plants* (ICN). This also signalled the end of dual nomenclature (Hawksworth 2011, Wingfield *et al.* 2012). A further implication of these changes was the option to develop lists of names to obtain “protected status”, to be ratified by the next International Botanical Congress (IBC XIX) in China in 2017 (Hawksworth *et al.* 2012).

The Assembling the Fungal Tree of Life project provided a major impetus towards a DNA-based classification of Fungi by applying multigene phylogenetics approaches comparable to the genealogical concordance proposed for species delimitation by Taylor *et al.* (2000). The focus was on elucidating the older fungal divergences and resulted in a classification that named lineages above ordinal level (Hibbett *et al.* 2007). However, reliable phylogenetic data for many relationships at genus and family ranks remains wanting. As a consequence of merging a morphology-based taxonomy into this new phylogenetic framework, and the abolishment of dual nomenclature, numerous name changes can be anticipated in some groups of fungi. A major problem encountered by incorporating DNA data was that most species of fungi could only be resolved as species complexes (Crous & Groenewald 2005, Crespo & Lumbsch 2012), while many genera were discovered to be poly- and or paraphyletic (Crous *et al.* 2009, Aveskamp *et al.* 2010, Hirooka *et al.* 2012, Quaedvlieg *et al.* 2013). Based on these changes, many plant pathogenic, industrial or medically important fungi had to be allocated to different genera, including the *Cylindrocarpon* complex (Chaverri *et al.* 2011), the *Fusarium* complex (Gräfenhan *et al.* 2011, Schroers *et al.* 2011), the *Alternaria* complex (Woudenberg *et al.* 2013), the *Septoria* complex (Quaedvlieg *et al.* 2013), the *Botryosphaeria* complex (Phillips *et al.* 2013), and many others.

In order to reduce the dramatic effects of combining phenotypic characters with genotypic characters and obtain a more stable taxonomic system, it is thus of the utmost importance to combine DNA-sequence based comparative methods with the application of generic names. During the past 14 years (2000–2013) the mycological community has described 1 833 fungal genera, for which only 155 (8.4 %) currently have types linked to reliably annotated ITS DNA sequence data in the public databases. In other words, the problems related to the imprecise morphological application of names without DNA data continues to worsen. To alleviate and contain this issue, we herewith launch The Genera of Fungi project, which will aim to sequence, restudy and/or recollect the type species of genera envisaged to be given a protected status at the IBC XIX in 2017. Although there are presently approximately 18 000 generic names of fungi in MycoBank and Index Fungorum, this list will focus on the subset of names that are currently accepted (Kirk *et al.* 2013).

The aims of this project are to:

- (1) Establish a new website, www.GeneraOfFungi.org, to host a database that will link metadata to other databases such as MycoBank, Index Fungorum, BOLD, UNITE, and associated DNA barcodes (ITS, LSU and other loci as needed) to GenBank and RTL (Schoch *et al.* 2014).
- (2) Source type specimens and cultures of the type species of genera from fungaria and Biological Resource Centres (BRCs), and derive the metadata required as explained below.
- (3) Recollect fresh material of the type species if not already available, and as far as possible derive DNA barcodes and cultures from this material.
- (4) Designate type species, and type specimens of those species, for those genera where this has not been indicated in the original publications.
- (5) Fix the genetic application of the type species of generic names by means of lecto-, neo-, or epitypification as appropriate, and at the same time deposit cultures in at least two Biological Resource Centres (BRCs) from which they would be widely available to the international research community.
- (6) Publish modern descriptions of the type species and relevant typifications in appropriate mycological journals (supplemented by MBT or IF numbers for registration), and also deposit associated metadata in www.GeneraOfFungi.org, which will link metadata to other databases as indicated above.

Generating DNA barcodes

Although the ITS region is the designated DNA barcode for fungal species identification (Schoch *et al.* 2012), the partial LSU (28S rDNA; spanning at least the first 850 bp – see Material & Methods below) is recommended for phylogenetic analyses to resolve and contextualise genera. Many loci can be employed in phylogenetic analyses but, we recommend that the ITS and LSU loci are generated on a routine basis for this project. To address the circumstances where DNA sequencing facilities are not freely available to

many mycologists, the International Mycological Association (IMA), in collaboration with the World Federation for Culture Collections (WFCC), plans to set up a global network of BRCs and fungaria, that will, in exchange for the deposit of cultures (and/or specimens), generate free barcodes for the depositor. These collaborating BRCs will be listed on the Genera of Fungi database website.

Publication strategy

Of primary concern is that metadata related to type species of genera be deposited in the Genera of Fungi database (www.GeneraOfFungi.org), and all new typification events are registered in MycoBank (MBT numbers) or Index Fungorum. Various publication options are possible, and genera could be published as individual articles (or several combined into a single article as done here) in mycological journals of choice. It is recommended that the following issues are addressed in such publications:

- (1) Taxonomic history of the genus.
- (2) Phylogenetic placement of the type species of the genus.
- (3) New nomenclature merging asexual and sexual generic names based on stability.
- (4) Generic and species description, with reference collection (e.g. fungarium), MycoBank or Index Fungorum, and INSDC sequence accession numbers.
- (5) Eventual name changes that result from the new phylogenetic placement.
- (6) Notes discussing the relevance and implications of the phylogeny of the genus.

Management

A team of associate editors will be appointed for major groups of fungi. It is recommended that mycologists in different countries form a national node, which could focus on trying to recollect the genera described from specific substrates in each country. In the meanwhile, MycoBank and Index Fungorum will try to elucidate which genera were described from different countries and on which substrates. This information is not currently present in our databases for most genera, and is the biggest impediment to this project. Mycologists could contact BRCs to get assistance to generate DNA barcodes of potential neo- or epitype material. The publication strategy followed will depend on the authors, but deposit of data in GoF will be facilitated via MycoBank (there is thus no duplication of work, as these databases are linked). Authors interested in contributing accounts of individual genera as part of larger multi-authored papers published in IMA Fungus, should submit materials to the following associate editors: Pedro Crous (p.crous@cbs.knaw.nl) and David Hawksworth (d.hawksworth@nhm.ac.uk) for ascomycetes and basidiomycetes, Thorsten Lumbsch (tlumbsch@fieldmuseum.org) for lichenized fungi, Kerstin Voigt (Kerstin.Voigt@hki-jena.de) for zygomycetes, and Roger Shivas (Roger.Shivas@daff.qld.gov.au) for rusts and smuts.

MATERIALS AND METHODS

Isolates

Several genera were re-described based on cultures obtained from the CBS-KNAW Fungal Biodiversity centre in Utrecht, The Netherlands (CBS-KNAW) and the working collection of P.W. Crous (CPC), housed at CBS. For fresh collections, leaves and twigs were placed in damp chambers, and incubated at room temperature for 1–2 d. Single conidial colonies were established from sporulating conidiomata in Petri dishes containing 2 % malt extract agar (MEA) as described earlier (Crous *et al.* 1991). Colonies were sub-cultured onto 2 % potato-dextrose agar (PDA), oatmeal agar (OA), MEA (Crous *et al.* 2009b), autoclaved pine needles on 2 % tap water agar (PNA) (Smith *et al.* 1996), and incubated at 25 °C under continuous near-ultraviolet light to promote sporulation. Reference strains and specimens are maintained at the CBS.

DNA isolation, amplification and analyses

Genomic DNA was extracted from fungal colonies growing on MEA using the UltraClean™ Microbial DNA Isolation Kit (MoBio Laboratories, Inc., Solana Beach, CA, USA) according to the manufacturer's protocol. The primers V9G (de Hoog & Gerrits van den Ende 1998) and LR5 (Vilgalys & Hester 1990) were used to amplify part (ITS) of the nuclear rDNA operon spanning the 3' end of the 18S nrRNA gene, the first internal transcribed spacer (ITS1), the 5.8S nrRNA gene, the second ITS region (ITS2) and approximately 900 bp of the 5' end of the 28S nrRNA gene. The primers ITS4 (White *et al.* 1990) and LSU1Fd (Crous *et al.* 2009a) were used as internal sequence primers to ensure good quality sequences over the entire length of the amplicon. Amplification conditions followed Cheewangkoon *et al.* (2008). The program SeqMan v. 7.0.0 (DNASTAR, Madison, WI, USA) was used to obtain consensus sequences of each isolate. Blast searches using ITS and LSU sequences were performed for each isolate and the closest matches were retrieved and included in the phylogenetic analysis. The sequence alignment and subsequent phylogenetic analyses of the LSU data were carried out using methods described by Crous *et al.* (2006). Gaps were treated as "fifth state" data in the parsimony analysis. Sequence data were deposited in GenBank (Table 1) and the alignment and tree in TreeBASE (<http://www.treebase.org>). Remaining sequence data are discussed under the species notes below.

Morphology

Slide preparations were mounted in clear lactic acid, lactophenol cotton blue or Shear's mounting fluid from colonies sporulating on MEA, PDA, PNA, or OA. Sections of conidiomata were made by hand for examination purposes. Observations were made with a Zeiss V20 Discovery stereomicroscope (Zeiss, Oberkochen, Germany), and with a Zeiss Axio Imager 2 light microscope using differential interference contrast (DIC) illumination and an AxioCam MRc5 camera and Zen software. Additional photomicrographs were done using a Nikon Eclipse Ni-U microscope (Nikon, Tokyo, Japan), a Nikon SMZ1500 stereo-microscope, Nikon DS-U3 digital camera and Nis Elements imaging software. Colony

Table 1. Collection details and GenBank accession numbers of isolates included in this study.

Species	Culture collection no ¹	Substrate	Location	Collector	GenBank Accession no ²	
					LSU	ITS
<i>Bartalinia robillardoides</i>	CBS 122705 (ex-epitype)	<i>Leptoglossus occidentalis</i>	Italy	–	KJ710438	KJ710460
<i>Chaetospermum chaetosporum</i>	CBS 154.59 (ex-neotype)	Submerged dead leaf of <i>Alnus glutinosa</i>	Switzerland: Ticino	A.L. van Beverwijk	KJ710439	KJ710461
<i>Coniella</i> cf. <i>fragariae</i>	CBS 612.75	Leaf of <i>Cordia myxa</i>	Pakistan: Lahore	S. Ahmed	KJ710440	KJ710462
	CBS 110394	Soil of rain forest	Peru: Iquitos	M. Christensen	KJ710441	KJ710463
<i>Coniella fragariae</i>	CBS 167.84 = CPC 3934	<i>Vitis vinifera</i>	Germany: Geisenheim	A. von Tiedemann	EU754149	AY339318
	CBS 172.49 = CPC 3930 (ex-neotype)	Stem base of <i>Fragaria</i>	Belgium: Lint	A. Jaarsveld	AY339282	AY339317
<i>Crinitospora pulchra</i>	CBS 183.52	<i>Tamarix</i>	–	S. de Boer	KJ710442	KJ710464
	CBS 198.82	Soil	France: Chancay	G. Bollen	EU754150	KJ710465
	CBS 138014 = CPC 22807 (ex-epitype)	Branches of <i>Mangifera indica</i>	Thailand	T. Trakunyingcharoen	KJ710443	KJ710466
<i>Eleutheromyces</i> sp.	CBS 458.88	<i>Lactarius scrobiculatus</i>	Germany	W. Helfer	EU754162	KJ710467
	CBS 139.90 = UAMH 5529	Decaying <i>Russulaceae</i>	Canada: Alberta	L. Sigler	EU754161	KJ710471
<i>Eleutheromyces subulatus</i>	CBS 113.86 (ex-epitype)	Decaying agaric	Sweden	K.A. Seifert	KJ710444	KJ710468
	CBS 126.75	Agaric, blackened and mummified	France: Massif des Cèdres	H.A. van der Aa	KJ710445	KJ710469
	CBS 127.75	Agaric, blackened and mummified	France: Revest de Bion	H.A. van der Aa	KJ710446	KJ710470
	CBS 781.83	<i>Trametes zonata</i>	United Kingdom: Scotland	W. Gams	KJ710447	KJ710472
<i>Kellermania yuccigena</i>	CBS 131727 = AR 3470	dead leaves of <i>Yucca filamentosa</i> ?	USA: New Mexico	A.W. Ramaley	KJ710450	KJ710475
	CBS 138015 = CPC 20627 (ex-epitype)	Leaves of <i>Yucca rostrata</i>	USA: California	P.W. Crous	KJ710449	KJ710474
<i>Mastigosporium album</i>	CPC 20623	Leaves of <i>Yucca rostrata</i>	USA: California	P.W. Crous	KJ710448	KJ710473
	CBS 138013 = CPC 22945 (ex-epitype)	<i>Alopecurus pratensis</i>	Netherlands: Utrecht	U. Damm	KJ710451	KJ710476
	CPC 22946	<i>Alopecurus pratensis</i>	Netherlands: Utrecht	U. Damm	KJ710452	KJ710477
<i>Mycotribulus</i> cf. <i>mirabilis</i>	CBS 133172 = CPC 20836	<i>Eucalyptus pellita</i> x <i>brassiana</i>	Indonesia	M.J. Wingfield	KJ710458	KJ710483
<i>Mycotribulus mirabilis</i>	CBS 138016 = CPC 14167 (ex-epitype)	Leaves of <i>Eucalyptus urophylla</i>	China	Cheng Mai & Xudong Zhao	KJ710456	KJ710481
	CPC 13390	Leaves of <i>Eucalyptus camaldulgensis</i>	Venezuela	M.J. Wingfield	KJ710453	KJ710478
	CPC 13391	Leaves of <i>Eucalyptus camaldulgensis</i>	Venezuela	M.J. Wingfield	KJ710454	KJ710479
	CPC 13392	Leaves of <i>Eucalyptus camaldulgensis</i>	Venezuela	M.J. Wingfield	KJ710455	KJ710480
	CPC 14168	Leaves of <i>Eucalyptus urophylla</i>	China	Cheng Mai & Xudong Zhao	KJ710457	KJ710482

¹AR: personal collection of A.W. Ramaley; CBS: CBS-KNAW Fungal Biodiversity Centre, Utrecht, The Netherlands; CPC: Culture collection of Pedro Crous, housed at CBS; UAMH: University of Alberta Mold Herbarium and Culture Collection, Edmonton, Canada.

²LSU: large subunit (28S) of the nrRNA gene; ITS: internal transcribed spacers and intervening 5.8S nrDNA.

characters and pigment production were noted after 1 mo of growth on MEA and OA (Crous *et al.* 2009b) incubated at 25 °C. Colony colours (surface and reverse) were rated according to the colour charts of Rayner (1970).

RESULTS

Phylogeny

For the type species treated here, amplicons of approximately 1 700 bases were obtained of the partial 18S rRNA, full length ITS and partial 28S rRNA (LSU) genes of the isolates listed in Table 1. The LSU alignment was used to resolve the generic placement of strains (Fig. 1) and the ITS (not shown) for species identification. The manually adjusted LSU alignment contained 86 sequences (including the outgroup sequence) and 798 characters including alignment gaps were used in the phylogenetic analysis; 349 of these were parsimony informative, 42 were variable and parsimony-uninformative, and 407 were constant. The parsimony analysis yielded the maximum setting of 1000 equally most parsimonious trees (TL = 1290 steps; CI = 0.493; RI = 0.928; RC = 0.458), which allowed the genera treated here to be assigned to at least order level (Fig. 1; discussed below in the Taxonomy section). Neighbour-joining analyses using three substitution models on the sequence alignment yielded tree topologies delimiting similar terminal clades to those of the parsimony analysis (data not shown), but with some rearrangements at the deeper nodes.

THE GENERA

Bartalinia Tassi, *Bull. Lab. Ort. Bot. Siena* 3: 3 (1900).

Synonymy: Unconfirmed generic synonyms include *Hyalotia* Guba 1961 (Nag Raj *et al.* 1975) and *Amphiciliella* Höhn. 1919 (Nag Raj & DiCosmo 1984).

Current generic circumscription: *Conidiomata* stromatic, varying from pycnidoid to indeterminate, subperidermal, intracortical or subepidermal in origin, immersed, uni- to plurilocular, locules occasionally convoluted, dark brown to brown, glabrous, wall of *textura angularis* or *textura globulosa*, sometimes of *textura prismatica*, cells thick-walled and dark brown to brown in the outer layers, becoming thin-walled and paler toward the conidial hymenium. *Conidiophores* arising from the inner layers lining the conidioma, or at the base and extending part way up the side walls, sparsely septate and irregularly branched, often reduced to conidiogenous cells, hyaline, thin-walled, smooth, with percurrent proliferations, and apical periclinal thickenings (collarettes and regeneration of conidiogenous cells absent). *Conidia* cylindrical to fusiform with an acute or blunt apex and a truncate base, straight or slightly curved, 3–4-euseptate, apical cell hyaline and devoid of contents, other cells hyaline to pale brown, wall smooth, with or without constrictions at septa, suprabasal cell longer than the rest, apical appendage single, arising as a tubular extension of the apical cell and not separated from it by a septum, invariably trifid with 2–4, narrow, attenuated,

flexuous, divergent branches; basal appendage tubular, single, unbranched, exogenous, filiform, flexuous.

Type species: *Bartalinia robillardoides* Tassi 1900.

Bartalinia robillardoides Tassi, *Bull. Lab. Ort. Bot. Siena* 3: 3 (1900).

Synonym: *Seimatosporium robillardoides* (Tassi) Arx, *Gen. Fungi Spor. Cult.*, 3rd edn: 224 (1981). (Fig. 2)

Foliicolous. *Conidiomata* stromatic, pycnidoid to indeterminate or variable, amphigenous, scattered to gregarious, subepidermal, initially immersed, becoming erumpent, globose or depressed globose to angular, 180–240 µm diam, 80–200 µm high, unilocular, glabrous brown to black, lacking an ostiole; wall to 40 µm thick, of *textura angularis*, cells thick-walled and brown in the outer layers, becoming thin-walled and paler toward the conidial hymenium. *Conidiophores* arising all around the cavity of the conidioma from the innermost wall layer, reduced to conidiogenous cells, invested in mucus. *Conidiogenous cells* ampulliform, hyaline, thin-walled, smooth, 4–8 × 3–4.5 µm. *Conidia* subcylindrical, 4-septate, smooth, slightly constricted at the septa, (19–)21–24(–27) × 3–4 µm, bearing appendages; basal cell obconic with a truncate base, hyaline; apical cell conical, hyaline, devoid of contents, forming a tubular, branched appendage; apical appendage branches into three unbranched, attenuated, flexuous, divergent branches, (15–)16–20(–22) µm long; basal appendage single, unbranched, filiform, flexuous, excentric, 4–7 µm long.

Culture characteristics: Colonies covering the dish in 2 wk at 25 °C, flat, spreading, with moderate aerial mycelium, and even, lobate margins. On PDA surface greyish at centre and olivaceous black toward the periphery; reverse olivaceous black. On MEA attaining 60 mm diam after 1 mo, surface dirty white to honey, with patches of pale olivaceous grey, reverse olivaceous grey with patches of dirty white. On OA surface umber with patches of pale olivaceous grey and buff, reverse dark brown at centre and sepia toward the periphery.

Specimens examined: **Italy**: Siena, Botanical Gardens, on *Callistemon speciosum*, Jan. 1900 (SIENA – holotype in Siena lost in transit; IMI 93089 (slide ex-holotype) – **lectotype designated here**, MBT178268). – **Italy**: on *Leptoglossus occidentalis*, collector unknown (CBS H-21728 – **epitype designated here**, MBT178279; culture ex-epitype CBS 122705). – **The Netherlands**: Raalte, on *Poa* sp., 2013, *W. Quaedvlieg* (CBS 136768).

Notes: The genus *Bartalinia* (*Amphisphaeriaceae*, *Xylariales*), has no known sexual morph, and presently contains around 22 names representing about 18 taxa, six of which were treated by Nag Raj (1993). Although von Arx (1981) regarded *Bartalinia* as synonym of *Seimatosporium*, this was not accepted by Nag Raj (1993) because of differences in their conidial appendages. Both are now recognised as genera in their own right (Tanaka *et al.* 2011). Nag Raj (1979) and Sutton (1993) transferred *Bartalinia nolinae* and *B. themedae* to the genera *Libartania* and *Kellermania*, respectively. Later Nag Raj (1993) included in *Bartalinia* some species of

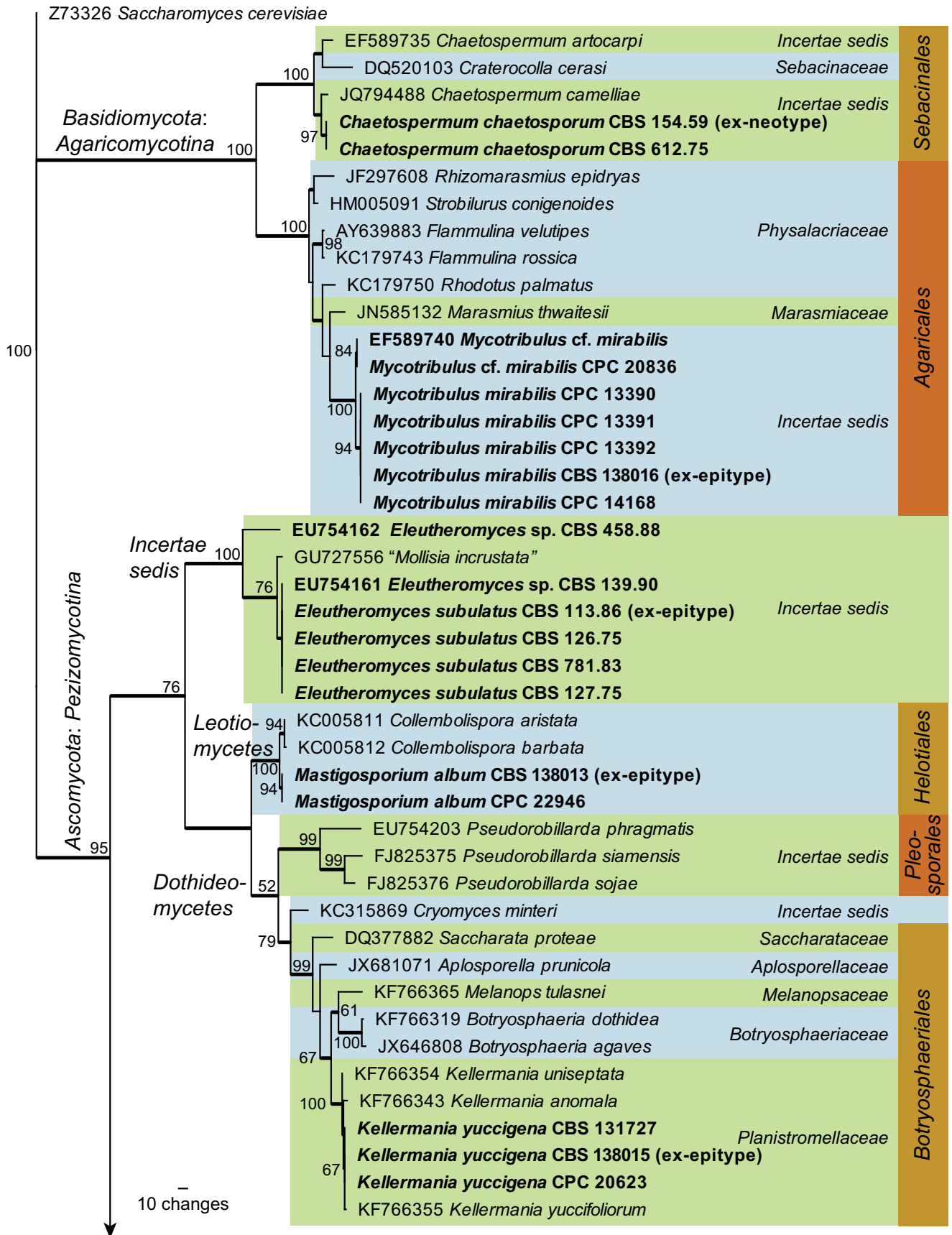


Fig. 1. The first of 1000 equally most parsimonious trees resulting from a parsimony analysis of the LSU sequence alignment. The bootstrap support values are indicated at the nodes and the scale bar represents the number of changes. Thickened branches reflect those branches present in the strict consensus tree. Orders are indicated in coloured blocks and species names in black text. GenBank accession numbers for downloaded sequences are shown before species names and culture collection numbers after species names. The tree was rooted to *Saccharomyces cerevisiae* (GenBank Z73326).

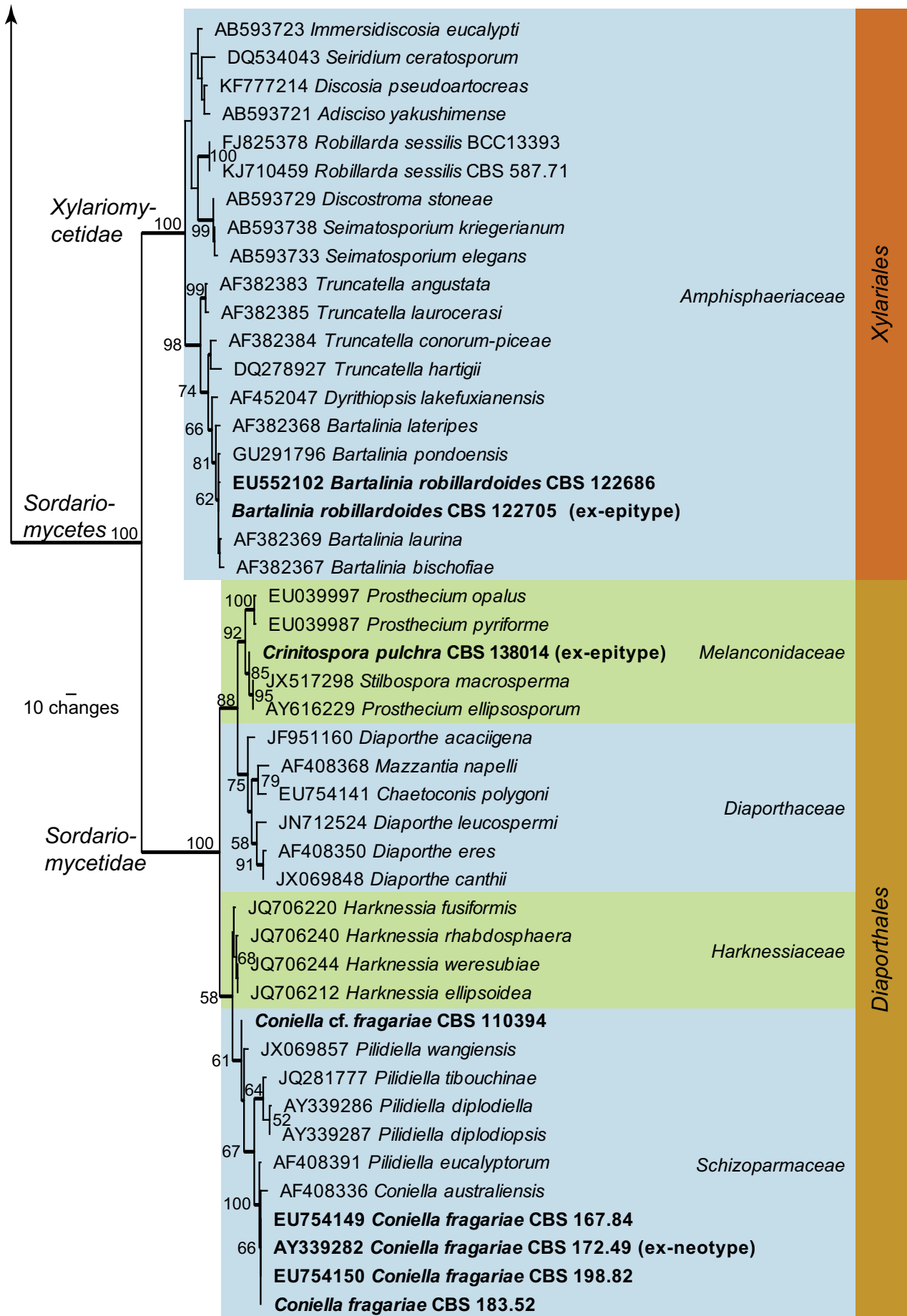


Fig. 1. (Continued).

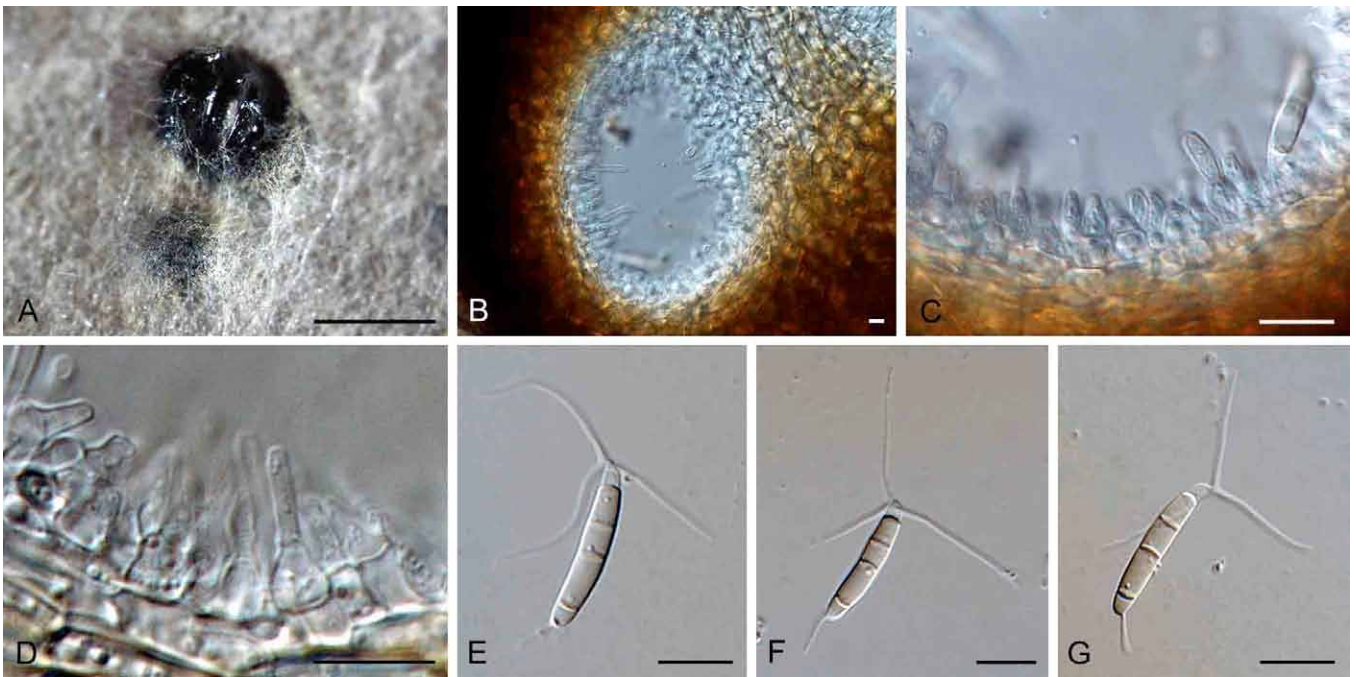


Fig. 2. *Bartalinia robillardoides* (CBS 122705). **A.** Colony sporulating on PDA. **B–D.** Section through conidiomatal wall, showing conidiogenous cells. **E–G.** Conidia. Bars: A = 250 μ m, all others = 10 μ m.

Pestalotia and *Hyalotia*, accepting six species in *Bartalinia* and questioned the status of four of them i.e. *B. bella*, *B. terricola*, *B. begoniae* and *B. bombacicola*. More recently, six new species have been added to the genus. Andrianova & Minter (2007) introduced the new species *B. goniolimonis* from leaf spots of *Goniolimon speciosum* and provided a taxonomic key to the genus. The most recent species is *B. pondoensis*, isolated from leaves of *Maytenus abbottii* in South Africa; which is similar on ITS to *B. laurina*, but morphologically different (Marinowitz *et al.* 2010). In spite of *Bartalinia* being a relatively unknown genus, cultures of *B. robillardoides* were reported to produce the anticancer drug taxol (Gangadevi & Muthumary 2008).

There are currently four ITS sequences listed as "*Bartalinia robillardoides*" in the NCBI GenBank nucleotide database. Of these, one (GenBank EU552102 derived from CBS 122686; from *Leucadendron* sp., South Africa) differs with 1 nucleotide from our ex-epitype strain, and the second (GenBank KF656706 derived from TCM-50; host and country not clearly specified) has some mismatches at the beginning and end of the sequences that could be the result of sequence annotation. The remaining two sequences (GenBank HM802301 derived from SKJM1096; host and country not specified; and GenBank AF405301 derived from BRIP 14180; from *Macrotyloma daltonii*, Australia) are dissimilar to our sequence and a megablast analysis using these sequences reveal that they are most likely *Bartalinia pondoensis*, a species described in 2010 and of which the sequence was released after the release date of these two GenBank sequences. Only two LSU sequences are currently present in GenBank; the first (GenBank EU552102 derived from CBS 122686; from *Leucadendron* sp., South Africa) differs in two nucleotides from our ex-epitype strain, and the second (GenBank AF382366 derived from BRIP 14180; from

Macrotyloma daltonii, Australia) also differs in two nucleotides from our sequence. Although GenBank AF382366 is from the same strain that could be *Bartalinia pondoensis*, a blast search only confirmed the affiliation of the sequence to the genus but not to the species.

Authors: D.A. Giraldo López and P.W. Crous

Chaetospermum Sacc., *Syll. Fung.* **10**: 706 (1892).

Synonym: *Efibulobasidium* K. Wells, *Mycologia* **67**: 148 (1975).

Synonymy: Unconfirmed generic synonyms include *Entomopatella* Petr. 1934, *Ciliostpora* Zimm. 1902 and *Chaetospermella* Naumov 1929 (Sutton 1977).

Current generic circumscription: *Conidiomata* stromatic, pycnidial, innate-erumpent, initially closed, ultimately opening by an irregular split in the apical wall, gelatinous, off white or pearl white when moist, unilocular, with the locule occasionally irregularly divided or convoluted, glabrous; wall heavily gelatinised, of *textura intricata* to *textura oblita*. *Conidiophores* lining the base and part way up the side walls and arising from the innermost elements of the wall, loosely aggregated, sparingly branched and septate at the base, hyaline, smooth, invested in mucus. *Conidiogenous cells* discrete, cylindrical to subcylindrical or irregular, hyaline, smooth, bearing a single terminal conidium or an apical cluster of up to four conidia; conidiogenous cell with several percurrent annellations with periclinal thickening, but collarettes absent. *Conidia* broadly ellipsoidal to cylindrical with obtuse ends, unicellular, hyaline, smooth; appendages tubular, not separated from the conidium body by septa, polar

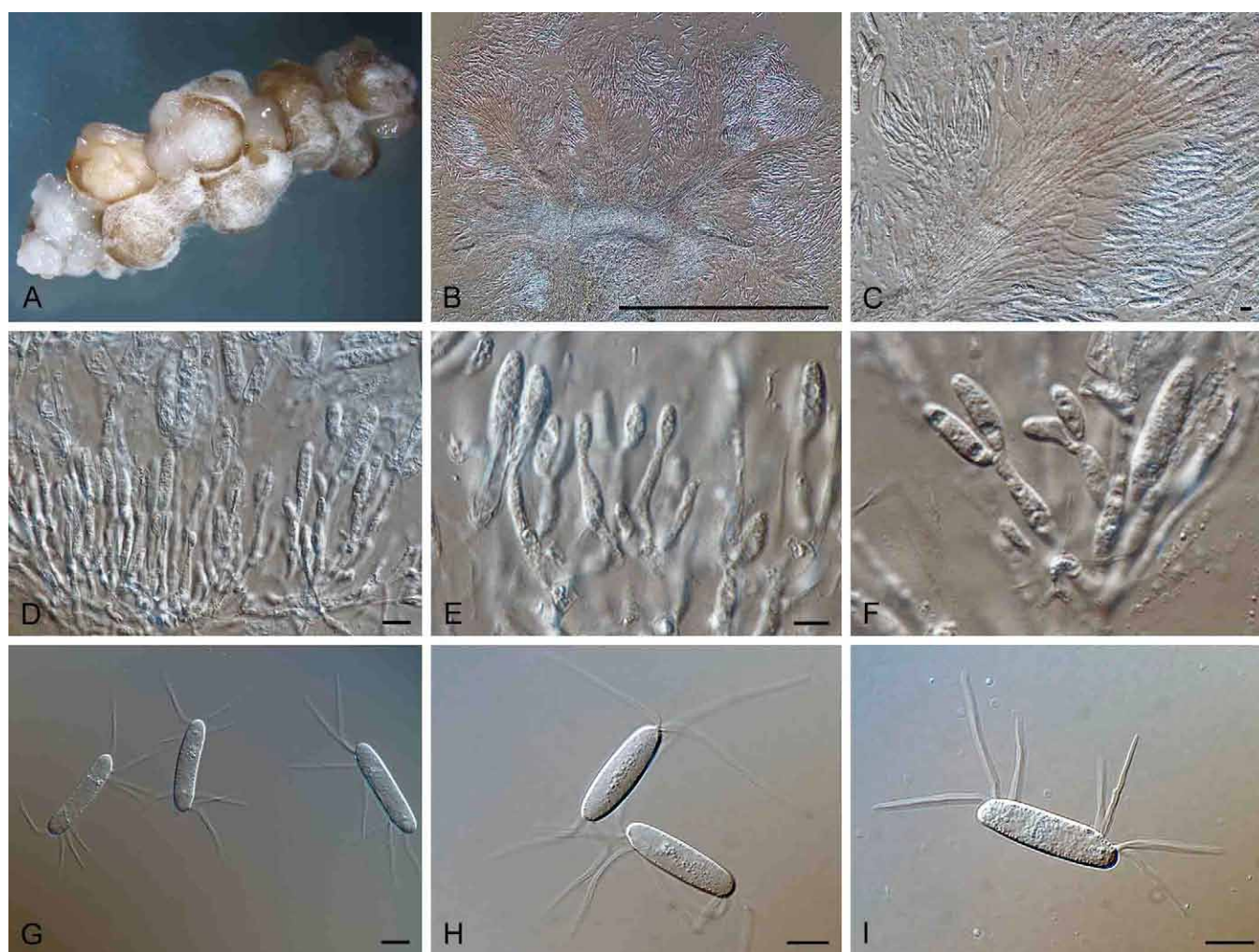


Fig. 3. *Chaetospermum chaetosporum* (CBS 154.59). **A.** Colony sporulating on SNA. **B–F.** Sections through conidiomata, showing conidiogenous cells. **G–I.** Conidia. Bars: B = 500 µm, all others = 10 µm.

or subpolar, occasionally lateral as well, unbranched, filiform or narrow and attenuated, flexuous, often collapsing and ribbon-like with age.

Type species: *Chaetospermum chaetosporum* (Pat.) A.L. Sm. & Ramsb. 1914.

Chaetospermum chaetosporum (Pat.) A.L. Sm. & Ramsb., *Trans. Brit. mycol. Soc.* **4**: 328 (1914).

Basionym: *Tubercularia chaetospora* Pat., *Bull. Soc. Mycol. Fr.* **4**: 39 (1888).

Synonym: *Chaetospermum chaetosporum* (Pat.) Höhn., *Mitt. Bot. Inst. Tech. Hochsch. Wien.* **1**: 87 (1924).

(Fig. 3)

Caulicolous or foliicolous. *Conidiomata* stromatic, pycnidoid, scattered to gregarious and confluent, subepidermal or subperidermal in origin, innate erumpent, globose to subglobose or hemispherical in sectional view, 400–500 µm diam, closed but dehiscing by an irregular split in the apical wall, pearl white and gelatinous when moist, yellowish brown and waxy when dry, glabrous; wall to 50 µm thick, of *textura intricata* to *textura oblita*. *Conidiophores* arising from the inner layer of the cavity, loosely aggregated, sparingly branched

and septate at the base, hyaline, smooth, invested in mucus. *Conidiogenous cells* discrete, cylindrical to subcylindrical or irregular, hyaline, smooth, bearing a single terminal conidium, (10–)12–21(–27) × 2–4 µm, without holoblastic-sympodial proliferations. *Conidia* broadly ellipsoidal to cylindrical with obtuse ends, hyaline, smooth, (24–)28–34(–36) × (5–)6–9(–10) µm; appendages 5–10 at each end, tubular, not separated from the conidium body by septa, circumpolar to subpolar, unbranched, filiform, flexuous, often collapsing and ribbon-like with age, (20–)28–43(–53) µm long.

Culture characteristics: Colonies spreading, flat, covering the dish in 2 wk at 25 °C, with sparse aerial mycelium, and even, smooth margins. On MEA and PDA surface dirty white with pale vinaceous pycnidia. On OA surface whitish or pale luteus covered with rosy buff pycnidia; reverse pale luteus.

Specimens examined: **France:** Lons-ie-Saulnier (Jura), on roots of *Poaceae*, 1888?, holotype presumed lost. – **Switzerland:** Ticino, affluent to Lago di Origgio, from submerged dead leaf of *Alnus glutinosa*, July 1958, A. L. van Beverwijk (CBS H-10131, – **neotype designated here**, MBT178269; culture ex-neotype CBS 154.59). – **Pakistan:** Lahore, from leaf of *Cordia myxa*, S. Ahmed (CBS H-10132, culture CBS 612.75).

Notes: *Chaetospermum* was introduced by Saccardo (1892) to accommodate *Tubercularia chaetospora*, a species described previously by Patouillard (1888) from decaying grass, using the name *C. tubercularioides*, which was changed to *C. chaetosporum* by Smith & Ramsbottom (1914) following the International rules of nomenclature, which is currently used for the type species of the genus. *Pestalozziella ambigua* from stems of *Artemisa* was described by von Höhnelt (1907), with similar conidia to those of *Tubercularia chaetospora*. Later the same author considered both species as co-generic (von Höhnelt 1924). Nag Raj (1993) reviewed the genus considering *C. gelatinosum* a synonym of *Mastigonema gelatinosum* and *C. carneum* a *nomem dubium*. Rajeshkumar et al. (2010) proposed the new species *Chaetospermum setosum*, isolated from leaves of *Mangifera indica* in India, and considered *C. indicum* as a synonym of *C. chaetospermum*. They also provided a taxonomy key for the genus. The genus *Chaetospermum* (*incertae sedis*, *Sebacinales*) presently contains eight species. Other than *Chaetospermum chaetosporum* frequently being isolated from leaf litter of diverse substrate, not much is known of this species, or the genus *Chaetospermum*. A conidiomatal developmental study of *C. chaetospermum* was published by Fonseka (1960), while Sutton (1977) treated several generic synonyms, and Nag Raj (1993) provided a key to four species.

The phylogeny of *Chaetospermum* is poorly known. Rungjindamai et al. (2008) based on LSU and SSU sequences suggested that *Chaetospermum* could be located in basidiomycetes, since two species of the genus, *C. camelliae* and *C. artocarpis*, were phylogenetically related with members of *Sebacinaceae* (*Sebacinales*, *Agaricomycetes*). Unfortunately, the type species of *Chaetospermum* was not included in that study. Our study revealed that the type species of the genus is a member of *Sebacinales*, which agrees with Rungjindamai et al. (2008), Wells & Bandoni (2001) and Kirschner & Oberwinkler (2009). Further evidences are the presence of a *Chaetospermum* morph in cultures of the basidiomycete *Efibulobasidium albescens* (Wells & Bandoni 2001), and of conidia of *Chaetospermum gossypinum* together with basidiospores of *Efibulobasidium albescens* in the same specimens (Kirschner & Oberwinkler 2009). Additionally, they observed morphological characteristics typical of *Sebacinales* such as dolipore septa with continuous parenthesomes in specimens of *C. chaetosporum*.

The ITS sequence data of *E. albescens* (type species of the genus *Efibulobasidium*, AF384860) shows 98.9 % similarity with CBS 154.59 (neotype of *C. chaetosporum*), suggesting that they are congeneric, and that *Chaetospermum* (1892) should have preference over *Efibulobasidium* (1975) (Wells 1975).

Authors: D.A. Giraldo López and P.W. Crous

Coniella Höhn., *Ber. dt. bot. Ges.* **36**: 316 (1918).

Synonym: *Cyclodomella* Mathur et al., *Sydowia* **13**: 144 (1959).

Current generic circumscription: *Conidiomata* pycnidial, immersed to semi-immersed, unilocular, glabrous, ostiolate,

brown to dark brown or black wall of thin, pale brown *textura angularis* on the exterior, and hyaline, thin-walled, *textura prismatica* in the inner layers except at the base which has a convex, pulvinate tissue of hyaline *textura angularis* giving rise to conidiophores or conidiogenous cells; ostiole central, circular or oval, often situated in a conical or rostrate neck. *Conidiophores* mostly reduced to conidiogenous cells, occasionally septate and branched at the base, invested in mucus. *Conidiogenous cells* discrete, cylindrical, subcylindrical, obclavate or lageniform, hyaline, smooth-walled, proliferating percurrently, or with visible periclinal thickening. *Conidia* ellipsoid, globose, napiform, fusiform or naviculate with a truncate base and an obtuse to apiculate apex, unicellular, thin- or thick-walled, smooth, olivaceous brown to brown, sometimes with a longitudinal germ-slit, with or without a mucoid appendage extending from the apex to base on one side of the conidium. *Spermatophores* formed in same conidioma, hyaline, smooth, 1-septate with several apical conidiogenous cells, or reduced to conidiogenous cells. *Spermatogenous cells* hyaline, smooth, lageniform to subcylindrical, with visible apical periclinal thickening. *Spermatia* hyaline, smooth, red-shaped with rounded ends.

Type species: *Coniella fragariae* (Oudem.) B. Sutton 1977 (syn. *Coniella pulchella* Höhn. 1918).

Coniella fragariae (Oudem.) B. Sutton, *Mycol. Pap.* **141**: 47 (1977).

Basionym: *Coniothyrium fragariae* Oudem., *Versl. Meded. Ned. K. Akad. Wet.*, ser. 2, **18**: 37 (1883).

Synonyms: *Clisosporium fragariae* (Oudem.) Kuntze, *Rev. Gen. Pl.* **3**: 458 (1898).

Coniella pulchella Höhn., *Ber. dt. bot. Ges.* **36**: 316 (1918).

Cyclodomella nigra P.N. Mathur et al., *Sydowia* **13**: 145 (1959).

(Fig. 4)

Conidiomata pycnidial, globose to depressed, 250–500 µm wide, initially appearing hyaline with a dark brown, internal conidial mass, becoming brown with age; ostiole central, 10–50 µm wide; wall 20–30 µm thick, consisting of 3–6 layers of pale to medium brown *textura angularis*; conidiomata containing a basal, central cushion of hyaline cells that give rise to hyaline conidiophores. *Conidiophores* densely aggregated, slender, subulate, simple, frequently branched above, reduced to conidiogenous cells, or with 1–2 supporting cells, 15–30 × (2–) 3–4 µm. *Conidiogenous cells* simple, tapering, hyaline, smooth, (12–)14–18(–20) × 3–4 µm, 1–1.5 µm wide at apex, surrounded by a gelatinous coating, apex with visible periclinal thickening, rarely with percurrent proliferation. *Conidia* ellipsoid, apices tapering, subobtusely rounded, tapering from middle towards a narrowly truncate base, medium brown, multi-guttulate when immature, becoming 1–2 guttulate when mature, wall darker brown than medium brown body of conidium, frequently with a lighter band of pigment extending over conidium, with a germ slit visible in older conidia, and mucous appendages also visible in lactic acid; appendages mostly basal, but also lateral along the length of the conidium, 7–12.5 × (4–)6–8(–10) µm. *Spermatia* also observed in some cultures, cylindrical, hyaline, straight with obtuse ends, 4–5 × 1–1.5 µm.

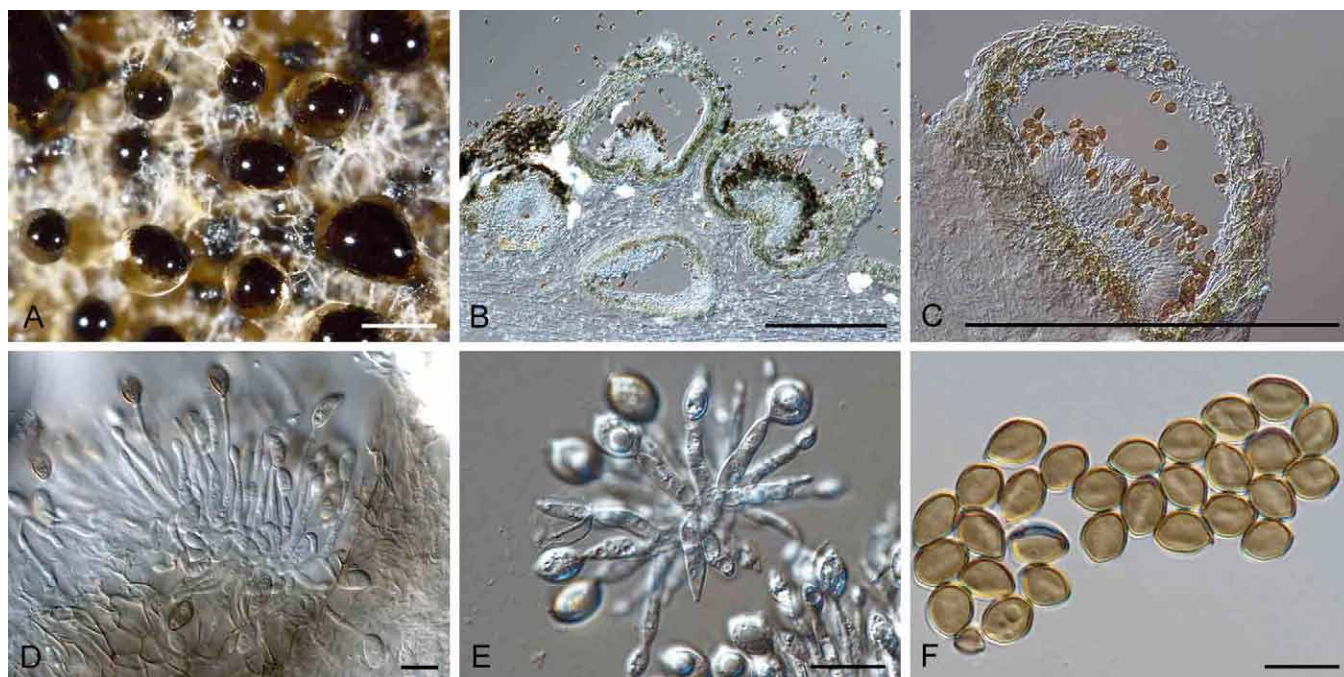


Fig. 4. *Coniella fragariae* (CBS 172.49). **A.** Colony sporulating on PDA. **B–C.** Sections through conidiomata. **D–E.** Conidiogenous cells. **F.** Conidia. Bars: A–B = 500 μ m, all others = 10 μ m.

Culture characteristics: Colonies on MEA flat, white on the surface, and pale luteous in reverse, reaching 60 mm after 2 wk at 25 °C, with black conidiomata evenly distributed on surface on the plate, same on PDA and OA.

Specimens examined: **Belgium:** Lint near Antwerpen, from stem base of *Fragaria* sp., Apr. 1949, A. Jaarsveld (CBS H-10697, **neotype designated here** for *Coniothyrium fragariae*, MBT178270; culture ex-neotype CBS 172.49 = CPC 3930); from *Tamarix* sp., S. de Boer (CBS H-10936, culture CBS 183.52). – **France:** Chancay, S-W of Tours, from soil sample, 1981, G. Bollen (CBS H-10723, culture CBS 198.82). – **Germany:** Sachsen, Königstein, on leaves of *Paeonia officinalis*, Sept. 1916, W. Krieger (FH – holotype of *Coniella pulchella*; slide ex-type WINF(M) 2408); Geisenheim, from *Vitis vinifera*, 1983, A. von Tiedemann (CBS H-10699, culture CBS 167.84). – **Peru:** Iquitos, from soil of rain forest, M. Christensen (CBS 110394).

Notes: We have been unable to trace any original material of *Coniothyrium fragariae* (The Netherlands, on *Fragaria vesca*, 1883, C.A.J. Oudemans), and hence a neotype is designated here to fix the application of the name. The concept of *C. fragariae* has not changed since the first molecular phylogeny was published on the genus (van Niekerc *et al.* 2004).

The genus *Coniella* currently includes about 30 species (*Schizoparmaceae*, *Diaporthales*), many of which are soil-borne, and well-known as leaf, stem, and root pathogens of a diverse range of hosts such as *Fragaria* spp., *Ananas comosus*, *Pinus patula*, *Rosa* spp., *Pisum* spp. (Sutton 1980, van Niekerc *et al.* 2004, Miranda *et al.* 2012). The genus was proposed by von Höhnell (1918) with a single species, *C. pulchella*, described from *Paeonia officinalis*. Petrak & Sydow (1927) split *Coniella* into two subgenera: *Euconiella*

and *Pseudoconiella*. The former included *C. pulchella* and *C. diplodiella* and the latter comprised *C. granati* (Sutton 1969). The genera *Anthasthoopta* and *Cyclodomella* were proposed for *A. simba* and *C. nigra*, respectively; the first species occurring on pods of *Caesalpinia pulcherrima* and the second one isolated from soil (Subramanian & Ramakrishnan 1956, Mathur & Thirumalachar 1959). Petrak (1960) did not agree with this proposal, and concluded that *Cyclodomella nigra* is a cultural variant of *Coniella diplodiella*. Later, Sutton (1969) considered both genera, *Anthasthoopta* and *Cyclodomella*, as synonymys of *Coniella*. *Coniella pulchella* was considered a synonym of *C. fragariae* by Sutton (1980), who as well as Nag Raj (1993), who treated the genus *Pilidiella* as a synonym of *Coniella*. However, van der Aa (in von Arx 1973) and von Arx (1981) treated *Coniella* and *Pilidiella* as separate genera, the former characterised by dark brown conidia and *Pilidiella* by hyaline conidia becoming pale brown with age. Molecular studies have confirmed the criteria of van der Aa (in von Arx 1973) and von Arx (1981) demonstrating that both genera are different. *Pilidiella* presently contains species with pigmented, as well as hyaline conidia, and *Schizoparme* sexual morphs, while *Coniella* comprises species with dark brown conidia. Rossman *et al.* (2007) introduced the family name *Schizoparmaceae* (*Diaporthales*) to accommodate these genera.

One strain that was previously identified as *Coniella fragariae* (CBS 110394), was revealed to belong to a different species based on the LSU sequence (Fig. 1).

Authors: D.A. Giraldo López and P.W. Crous

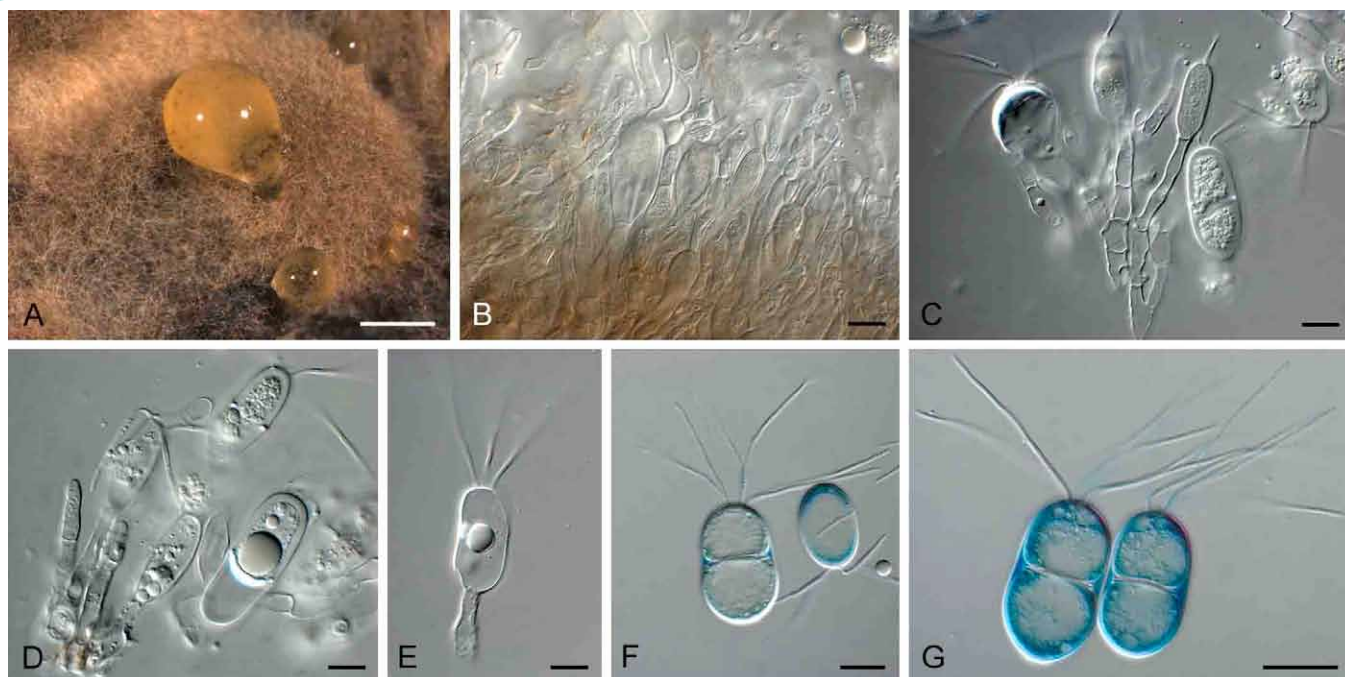


Fig. 5. *Crinitospora pulchra* (CBS 138014). **A.** Colony sporulating on MEA. **B–E.** Conidiogenous cells giving rise to conidia. **F–G.** Conidia. Bars: A = 300 μm , all others = 10 μm .

Crinitospora B. Sutton & Alcorn, *Trans. Brit. mycol. Soc.* **84**: 439 (1985).

Current generic circumscription: *Conidiomata* stromatic, acervuloid, epidermal, immersed to semi-immersed, brown; basal stroma of *textura angularis* to *textura globulosa*. *Conidiophores* arising from the uppermost cells of basal and parietal tissue, unbranched, septate at only the base, hyaline, smooth, invested in mucus. *Conidiogenous cells* discrete or integrated, cylindrical to lageniform, hyaline, smooth-walled; proliferating several times percurrently at apex. *Conidia* ellipsoid with an obtuse apex and broad truncate base, euseptate, hyaline, thick-walled, smooth, with several appendages that are tubular, unbranched, filiform, flexuous, arising from the apex.

Type species: *Crinitospora pulchra* B. Sutton & Alcorn 1985.

Crinitospora pulchra B. Sutton & Alcorn, *Trans. Br. mycol. Soc.* **84**: 439 (1985).

(Fig. 5)

Caulicolous. *Conidiomata* stromatic, acervuloid separate, immersed to erumpent, 200–300 μm high, 300–500 μm wide, brown, opening by irregular rupture with yellow conidial cirrus, that turns brown with age; wall of several layers of pale brown *textura angularis* to *globulosa*. *Conidiophores* lining the inner cavity, hyaline, smooth, 1–2-septate, unbranched, subcylindrical, to 50 μm long. *Conidiogenous cells* subcylindrical to lageniform, hyaline, smooth, 8–25 \times 3–6 μm . *Conidia* hyaline, smooth, guttulate, ellipsoid, with obtuse apex and broadly truncate base (3–5 μm diam), medianly 1-septate, rarely 0–2-septate, (20–)30–35(–40) \times (10–)15–17(–20) μm , with 4–10 apical appendages, tubular,

unbranched, filiform, divergent, flexuous, to 50 μm long; conidia turn brown at germination in culture.

Culture characteristics: Colonies reaching 40 mm diam after 2 wk at 25 $^{\circ}\text{C}$, flat, spreading, with sparse aerial mycelium, and lobate, feathery margins. On MEA surface olivaceous grey, with patches of buff, reverse reverse olivaceous grey in centre, dirty white in outer region. On OA surface olivaceous grey. On PDA surface dirty white, mostly with submerged mycelium, developing yellow concentric rings in older cultures.

Specimen examined: **Australia:** Queensland, Bowen, on branches of *Mangifera indica*, 18 Dec. 1980, I.F. Muirhead (IMI 259110 – holotype). – **Thailand:** on branches of *M. indica*, 2012, T. Trakunyingcharoen (CBS H-21729 – **epitype designated here**, MBT178271; CPC 22807 = CBS 138014 – culture ex-epitype).

Notes: The genus *Crinitospora* (*Melanconidaceae*, *Diaporthales*) is monotypic and no sexual morph has thus far been linked to it. The fungus was initially collected from twigs of *Mangifera indica* in Australia (Sutton & Alcorn 1985); the collection from Thailand studied here, also on *M. indica*, represents the second report of this fungus. Although it is caulicolous on *M. indica*, not much is known about its ecology or pathology.

Authors: P.W. Crous and T. Trakunyingcharoen

Eleutheromyces Fuckel, *Jahrb. Nassau Ver. Naturk.* **23–24**: 183 (1870) [“1869”].

Synonymy: Unconfirmed generic synonyms include *Eleutheromycella* Höhn. 1908, and *Eleutheris* Clem. & Shear 1931 (Nag Raj 1993).

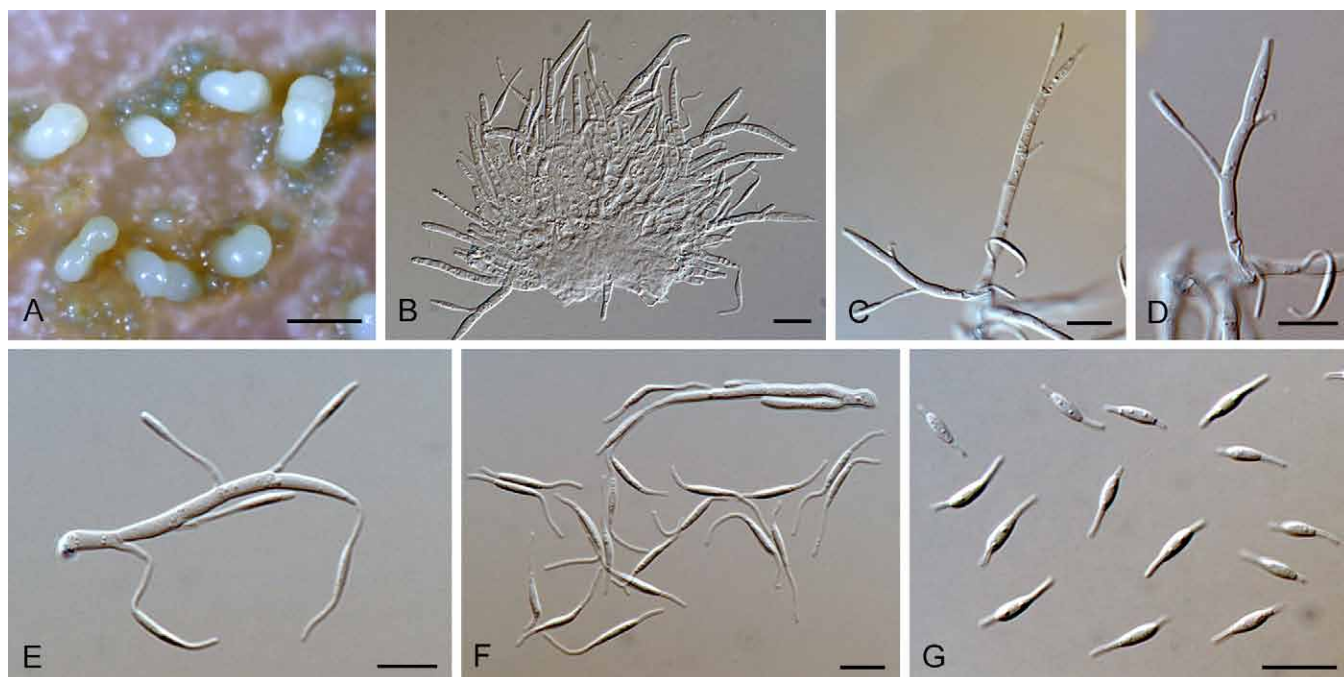


Fig. 6. *Eleutheromyces subulatus* (CBS 113.86). **A.** Colony sporulating on OA. **B–F.** Conidiophores giving rise to conidia. **G.** Smaller conidia of unidentified *Eleutheromyces* sp. (CBS 139.90). Bars: A = 250 μ m, all others = 10 μ m.

Current generic circumscription: *Conidiomata* pycnidial, conical to cornute, gelatinous, translucent yellowish or yellowish brown to dark brown, unilocular, glabrous, ostiolate, wall of *textura angularis*; ostiole central, circular. *Conidiophores* arising all around the cavity of the conidioma, cylindrical, branched mostly at the base, septate, hyaline, smooth, invested in mucus. *Conidiogenous cells* integrated with the conidiogenous loci immediately below the septa, hyaline, smooth-walled, with visible periclinal thickening at apex. *Conidia* aseptate, lenticular to fusiform, hyaline, smooth-walled; apical and basal appendages cellular, delimited from the conidium body by septa; basal appendage developing before the conidium body.

Type species: *Eleutheromyces subulatus* (Tode) Fuckel 1870.

Eleutheromyces subulatus (Tode) Fuckel, *Jahrb. Nassauischen Vereins Naturk.* **23–24**: 183 (1870) [“1869”].

Basionym: *Sphaeronaema subulatum* Tode, *Fung. mecklenb. sel.* **2**: 44 (1790); Fr., *Syst. mycol.* **2**: 536 (1823).

(Fig. 6)

Fungicolous. *Conidiomata* pycnidial, scattered to densely gregarious, seemingly superficial but innate erumpent, oval, long conical or cornute, 100–250 μ m diam, 150–500 μ m high, unilocular, glabrous, gelatinous, translucent, yellowish brown when dry, paler coloured when moist; wall up to 45 μ m thick, of *textura angularis*, cells thick-walled, pale brown to pale yellow; ostiole central, circular. *Conidiophores* lining the cavity of the conidioma, cylindrical, branched mostly at the base, septate, often variously curved, hyaline, smooth, to 60 μ m long, invested in mucus. *Conidiogenous cells* cylindrical, integrated, hyaline, smooth, 5.5–13 \times 2.5–4 μ m. *Conidia*

ellipsoidal or lenticular, aseptate, hyaline, 4.5–7 \times 2–4 μ m (av. 6 \times 2 μ m), one appendage at each end delimited by a septum; appendages tubular, attenuated; apical appendage 2–5 μ m long; basal appendage 1–3 μ m long.

Culture characteristics: Colonies flat, spreading, reaching 40 mm diam after 2 wk at 25 $^{\circ}$ C, with sparse aerial mycelium, and smooth margins. On MEA reaching 11–33 mm after 1 mo, surface and reverse dirty white to peach or coral with honey regions. On OA attaining 40–45 mm after 1 mo; surface buff, ochraceous or flesh, pycnidia with spores beige in mass.

Specimens examined: **Canada:** *Alberta:* Rocky-Clearwater Forest, from decaying *Russulaceae*, Sep. 1986, L. Sigler (culture CBS 139.90 = UAMH 5529). – **France:** Massif des Cèdres, MTG. du Lubéron, from agaric, blackened and mummified, Oct. 1974, H.A. van der Aa (CBS 126.75); Revest de Bion, Vaucluse, from agaric, blackened and mummified, Oct. 1974, H.A. van der Aa (CBS H-12348, H-12349, H-12350, H-12351 and H-12352; culture CBS 127.75). – **Sweden:** on decaying agaric [Fries, *Scleromyceti Sueciae* no. 325] (UPS – **lectotype designated here**, MBT178272); near Lund, from decaying agaric, Sep. 1985, K.A. Seifert (CBS H-12355 – **epitype designated here**, MBT178280; CBS 113.86 = UAMH 5671 – culture ex-epitype). – **UK:** *Argyllshire:* Struan Wood, from *Trametes zonata*, Sept. 1983, W. Gams (culture CBS 781.83).

Notes: The genus *Eleutheromyces* (*incertae sedis*, *Helotiales*) presently contains two species that are fungicolous, growing on agarics. The genus has been reported from North America and Europe. A *Hyphozyma* synasexual morph was reported for *E. subulatus* by Sigler (1990), while Tsuneda *et al.* (1997) again linked this morph to black spot disease of *Lentinula edodes*. Two cultures listed in the CBS collection as *E. subulatus* (CBS 458.88 and CBS 139.90) were found to be

phylogenetically and morphologically distinct (Figs 1 & 6, respectively) and represent different taxa. Highest similarity of the LSU sequences was found with “*Mollisia incrustata*” GenBank GU727556; however, this sequence does not appear to be congeneric with other *Mollisia* sequences on GenBank (data not shown) and thus the application of the supposed taxonomic lineage of *Mollisia* (*Leotiomyces*; *Helotiales*; *Dermateaceae*) would not be confirmed here. Examination of the blast results also did not result in a clear affinity to any of the classes, with a more or less equal similarity to both *Leotiomyces* and *Sordariomyces* and therefore this genus is treated here as *incertae sedis*. It is quite possible that the genus belongs to a class that is currently not represented in the NCBI GenBank nucleotide database.

Authors: D.A. Giraldo López and P.W. Crous

Kellermania Ellis & Everh., *J. Mycol.* 1: 153 (1885).

Synonyms: *Piptarthron* Mont. ex Höhn., *Hedwigia*: 60: 203 (1918).

Alpakesa Subram. & K. Ramakr., *J. Indian Bot. Soc.* 33: 204 (1954).

Planistroma A.W. Ramaley, *Mycotaxon* 42: 69 (1991).

Planistromella A.W. Ramaley, *Mycotaxon* 47: 260 (1993).

Current generic circumscription: *Conidiomata* pycnidial, immersed, glabrous, ostiolate; wall thick, of *textura angularis*, cells thick-walled, dark brown to brown in the outer layers, and of *textura prismatica*, cells thin-walled, hyaline in the inner layers, with columnar, thin-walled, colourless cells surrounding the ostiole; ostiole circular or oval, non-papillate. *Conidiophores* lining the cavity of the conidioma, reduced to conidiogenous cells, invested in mucus. *Conidiogenous cells* discrete, often of two kinds: those producing macroconidia, lining most of the conidiomatal cavity, cylindrical to subcylindrical, hyaline, smooth; those producing microconidia confined to the area of inner wall around the ostiole, ampulliform to broadly ampulliform, hyaline, smooth. *Conidiogenesis* ontogeny holoblastic by apical wall-building in the first conidium and by replacement wall-building in subsequent conidia; maturation by moderate diffuse wall-building synchronous with conidium ontogeny; delimitation by a transverse septum; secession schizolytic; proliferation usually absent, when present enteroblastic-percurrent to produce an additional conidium at a higher level; periclinal thickenings absent, but occasional annellation may be present; regeneration of conidiogenous cells absent. *Macroconidia* cylindrical to narrowly clavate with a truncate base, unicellular or euseptate, hyaline, thick-walled, smooth; appendages arising initially as tubular extensions of the conidium body, single, stout and unbranched, or up to six, attenuated, flexuous. *Microconidia* cylindrical to ellipsoidal or irregular with a rounded or blunt apex and a truncate base bearing minute marginal frills, unicellular, hyaline, smooth.

Type species: *Kellermania yuccigena* Ellis & Everh. 1885.

Kellermania yuccigena Ellis & Everh., *J. Mycol.* 1(12): 154 (1885); as ‘*yuccaegenae*’.

Synonym: *Planistromella uniseptata* A.W. Ramaley, *Mycotaxon* 47: 267 (1993).

(Fig. 7)

Foliicolous. Description based on colonies sporulating on OA. *Conidiomata* pycnidial, black, solitary, immersed, globose, unilocular, to 300 µm diam; wall of 8–10 cells of brown *textura angularis*; ostiole central, non-papillate, to 20 µm diam, exuding a hyaline conidial mass. *Conidiophores* lining the inner cavity, reduced to conidiogenous cells, hyaline, smooth, subcylindrical to ampulliform, (10–15 (–25) × 5–7 (–25) µm (shorter on host material, to 12 µm in length, and 6 µm in width), proliferating percurrently at apex (much more prominent in culture), invested in mucus. *Conidia* hyaline, smooth, guttulate, cylindrical, 1-septate (submedian), (35–)40–50 (–62) × (9–)10–12 (–14) µm (slightly wider on OA than on host tissue); apex giving rise to a simple setulate, unbranched appendage (but on OA at times bifurcate), 22–32 µm long; conidial base truncate, with a minute marginal frill, 1 µm long. *Microconidia* observed in culture, forming in same conidioma, hyaline, smooth, guttulate, subcylindrical, aseptate, apex obtuse, base truncate, 6–20 × 4–6 µm.

Culture characteristics: Colonies spreading, flat, reaching 50 mm diam after 2 wk at 25 °C, with moderate, fluffy aerial mycelium and feathery, lobate margins. On MEA surface dirty white, reverse buff. OA surface dirty white to cream; on PDA surface and reverse dirty white.

Specimens examined: **USA:** Kansas: Riley Co., Manhattan, on leaves of *Yucca angustifolia*, 5 June 1885, W.A. Kellerman 753 (NY – holotype of *K. yuccigena*; BPI 374463 – isotype; New Mexico: Chaves Co., mile 302.05 on US Highway 380, on dead leaves of *Yucca filamentosa*?, 24 Oct. 1993, A.W. Ramaley (AR 3470 = CBS 131727; isolated by Ramaley from AWR 9325, BPI 882828 – dried culture on PDA); New Mexico: Socorro County, west side of US Highway 25, mile 105.4, on leaves of *Yucca elata*, 12 Apr. 1992, A.W. Ramaley 9217 (UC 1475102 – holotype of *P. uniseptata*); California: Walnut Creek, Ruth Bancroft Garden, 1552 Bancroft Road, on leaves of *Yucca rostrata*, 20 Mar. 2012, P.W. Crous (CBS H-21730 – **epitype designated here** of *K. yuccigena*, MBT178281; cultures ex-epitype CPC 20627 = CBS 138015, CPC 20623).

Notes: The genus *Kellermania* (*Planistromataceae*, *Botryosphaerales*; Slippers et al. 2013) presently includes around 40 species, many of which were recently included in phylogenetic studies (Minnis et al. 2012, Crous et al. 2013). Although Sutton (1980) retained *Alpakesa*, *Kellermania*, and *Piptarthron* as separate genera, Nag Raj (1993) reduced *Alpakesa* to synonymy under *Kellermania*. Minnis et al. (2012) published the first phylogenetic revision of the group, and reduced all these genera to synonymy under *Kellermania*, supporting the view of Crous et al. (2012) that conidial appendages as single characters have insufficient value to separate genera in coelomycetes, and should rather be seen as species-specific characters. Names formerly described in genera typified by sexual morphs (*Planistroma*,

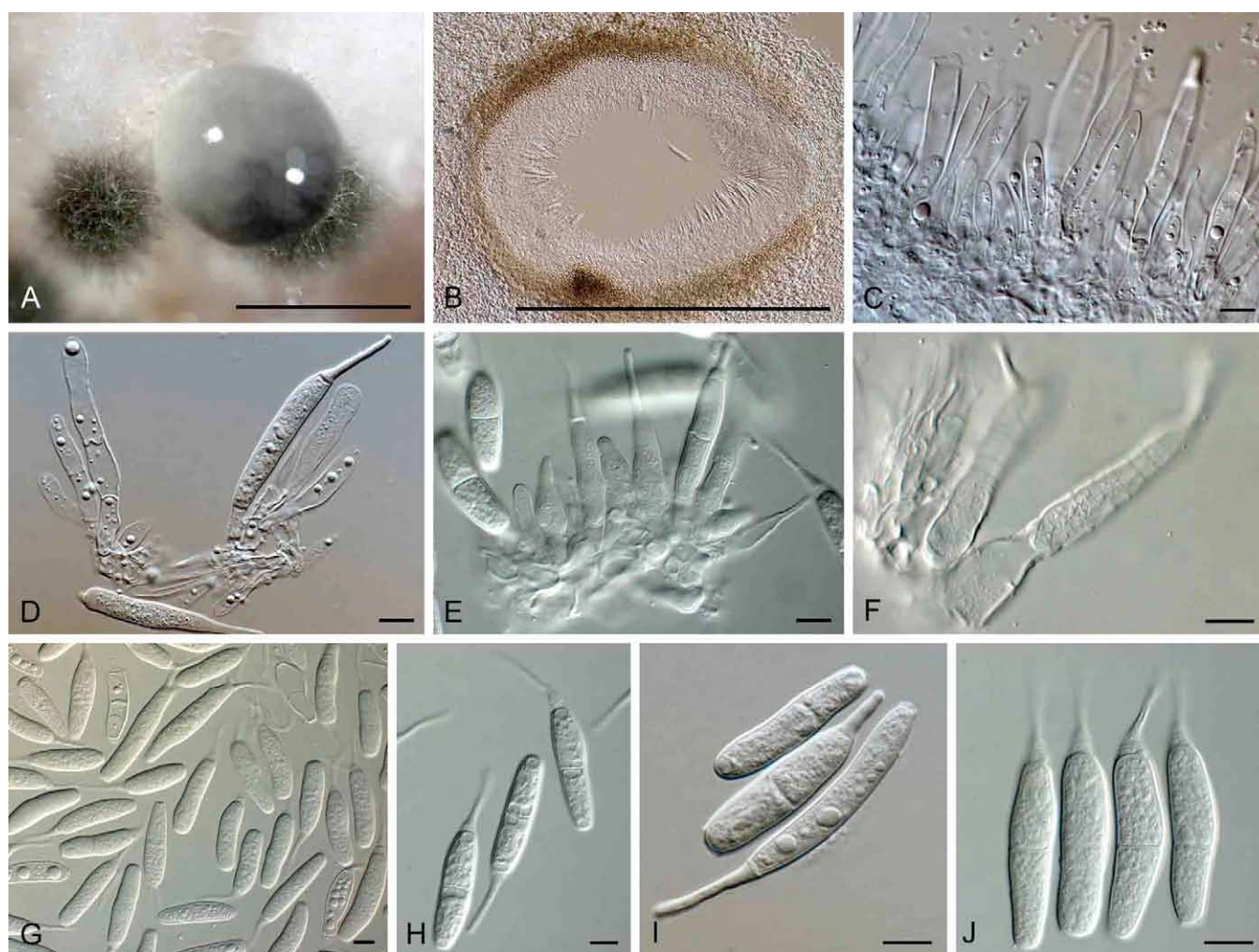


Fig. 7. *Kellermania yuccigena* (A–D, I = CBS 131727, others = CBS 138015). **A.** Colony sporulating on OA. **B.** Section through conidioma showing conidiogenous cells. **C–F.** Conidiogenous cells giving rise to conidia. **G–J.** Conidia. Bars: A–B = 300 μ m, all others = 10 μ m.

Planistromella), were combined into *Kellermania* by Minnis *et al.* (2012).

Authors: P.W. Crous and D.A. Giraldo López

Mastigosporium Riess, *Beitr. Mykol.* 2: 56 (1852).

Synonymy: Unconfirmed generic synonyms include *Amastigosporium* Bond.-Mont. and *Amastigis* Clem. & Shear 1931 (Braun 1995).

Current generic circumscription: Graminicolous, causing leaf spots. *Colonies* amphigenous, whitish, subeffuse to dense. *Mycelium* internal, hyphae inter- and intracellular, hyaline, septate, sparsely branched, narrow. *Conidiophores* usually reduced to a single conidiogenous cell, solitary or loosely grouped, occasionally subfasciculate, arising from internal hyphae by the formation of a narrow penetration hypha which perforates the outer epidermal wall and cuticle and develops into a more or less cylindrical, colourless superficial conidiogenous cell. *Conidiogenesis* monoblastic, determinate to polyblastic, proliferation percurrent, inconspicuously annellated; conidial scars unthickened, not darkened, more

or less flat, truncate to somewhat convex. *Conidia* solitary, subcylindric, broadly ellipsoid-fusiform, euseptate, hyaline, smooth, without or with filiform appendages, hila unthickened, not darkened, but conidia sometimes with a small cingulum-like ring at the base; conidial secession schizolytic.

Sexual morph: unknown

Type species: *Mastigosporium album* Riess 1852.

Mastigosporium album Riess, *Beitr. Mykol.* 2: 56 (1852). (Fig. 8)

Leaf spots amphigenous, pale brown, subcircular, up to 5 mm diam, containing creamy sporodochia. *Mycelium* consisting of hyaline, smooth, thin-walled, branched, septate, 2–3 μ m diam hyphae. *Conidiophores* smooth, hyaline, subcylindrical, 1–3-septate, mostly unbranched, flexuous, arising from a brown stroma, 20–70 \times 5–7 μ m. *Conidiogenous cells* terminal, integrated, subcylindrical, smooth, hyaline, proliferating sympodially and percurrently at apex, 15–25 \times 5–7 μ m. *Conidia* solitary, obclavate to fusoid-ellipsoid, hyaline, guttulate, straight, 3–5 transversely euseptate, constricted at septa, hyaline but

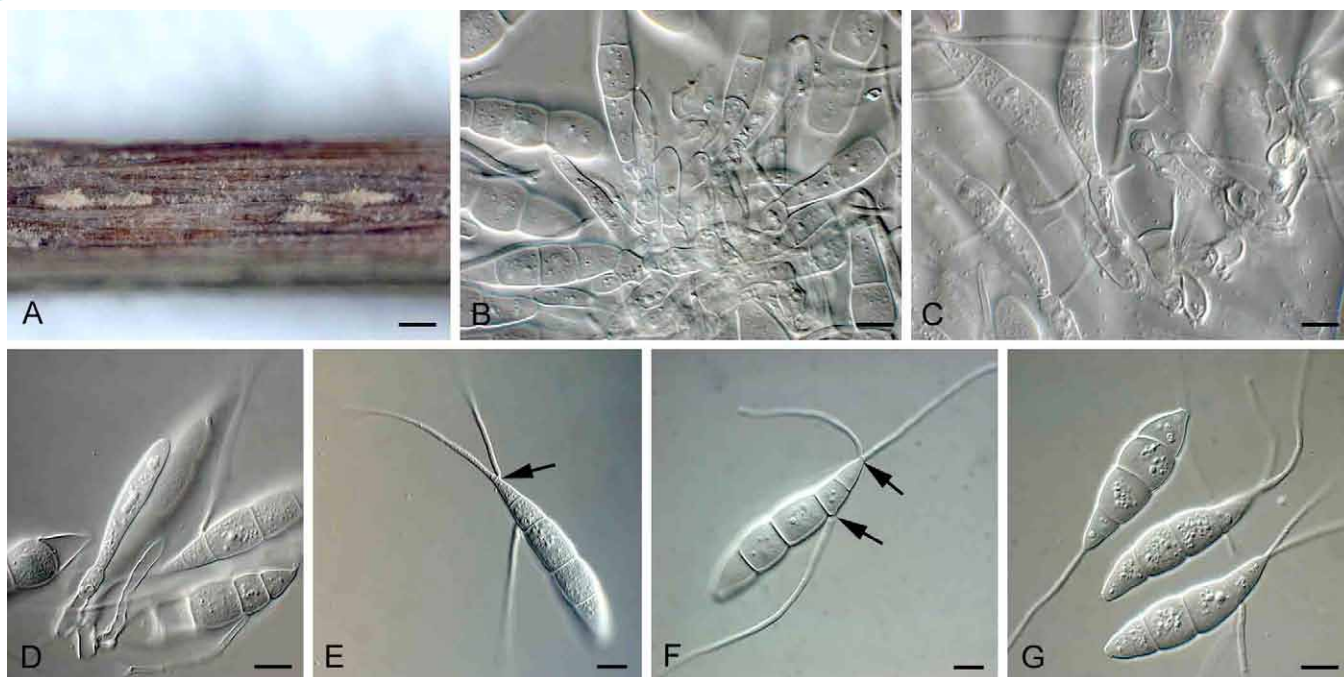


Fig. 8. *Mastigosporium album* (CPC 22946). **A.** Conidiomata forming on PNA. **B–D.** Conidiogenous cells giving rise to conidia. **E–G.** Conidia with lateral and apical appendages (arrows). Bars: A = 300 μm , all others = 10 μm .

appearing olivaceous with age, widest in second cell from base, hilum truncate, 3–7 μm diam, with minute marginal frill, (48–) 55–65(–70) \times (10–)12–15(–17) μm . Conidia containing several cellular appendages that are hyaline, smooth, subcylindrical, branched or not, septate. Apical appendage arising from terminal end, 20–120 \times 2–3 μm , with 1–3 lateral branches, or branching dichotomously, flexuous, or apex giving rise to two appendages; apical appendage bluntly rounded, rarely with clavate apex. Lateral appendages (1–2) arising from apical cell or second or even third cell from apex, 40–100 μm long, 0–3-septate.

Culture characteristics: Colonies slow-growing, reaching 10 mm diam after 2 wk at 25 $^{\circ}\text{C}$, erumpent, with sparse aerial mycelium, and uneven, lobate margins. On MEA and PDA surface dirty white to buff. On OA surface umber with ochreous, diffuse pigment.

Specimens examined: **Germany:** near Kassel, on *Alopecurus pratensis*, 1852, Riess [Klotzsch, Herb. Viv. mycol. no. 1758] (HAL – lectotype, designated in Braun 1995: 261). – **The Netherlands:** Utrecht, Rhijnauwen, on *A. pratensis*, May 2013, U. Damm (CBS H-21731 – **epitype designated here**, MBT178282; cultures ex-epitype CPC 22945 = CBS 138013, CPC 22946).

Notes: The genus *Mastigosporium* (*Helotiales*) has around 10 species and five varieties, and is known to have a high degree of host specialisation. Species of the genus are commonly associated with leaf spot diseases of *Poaceae*. The type species, *M. album*, is known from several grass species, occurring commonly in temperate regions, but also known from the Arctic. It is especially common on species of *Alopecurus* (Braun 1995).

Authors: D.A. Giraldo López, U. Damm, and P.W. Crous

Mycotribulus Nag Raj & W.B. Kendr., *Canad. J. Bot.* **48:** 2219 (1970).

Current generic circumscription: *Conidiomata* pycnidoid, immersed at first and then becoming partly erumpent, unilocular, glabrous, brown, lacking an ostiole but dehiscing by an irregular rupture in the apical wall and overlying host tissue; wall of *textura angularis*, cells thick-walled and brown in the outer layers, thin walled and colourless in the inner layers. *Conidiophores* intermingled with paraphyses, arising from the inner layer of cells of the wall all around the cavity of the conidioma, branched or unbranched and septate at the base, colourless, smooth, invested in mucus. *Paraphyses* filamentous, branched or unbranched, septate, colourless, smooth, narrow at the base, broad and deeply lobed or irregular at the apex. *Conidiogenous cells* discrete, subcylindrical to obclavate, colourless, smooth. *Conidiogenesis* holoblastic, maturation by diffuse wall-building synchronous with conidium ontogeny; delimitation by a transverse septum; secession schizolytic, annellations, periclinal thickenings and regeneration of conidiogenous cells absent. *Conidia* naviculate to fusiform with a truncate base and an acute apex, unicellular, colourless, guttulate; bearing appendages at both ends; appendages tubular, filiform, flexuous, unbranched, apical appendage single; basal appendages 2–4; inserted laterally, slightly above conidium base.

Type species: *Mycotribulus mirabilis* Nag Raj & W.B. Kendr. 1970.

Mycotribulus mirabilis Nag Raj & W.B. Kendr., *Canad. J. Bot.* **48:** 2219 (1970).

(Fig. 9)

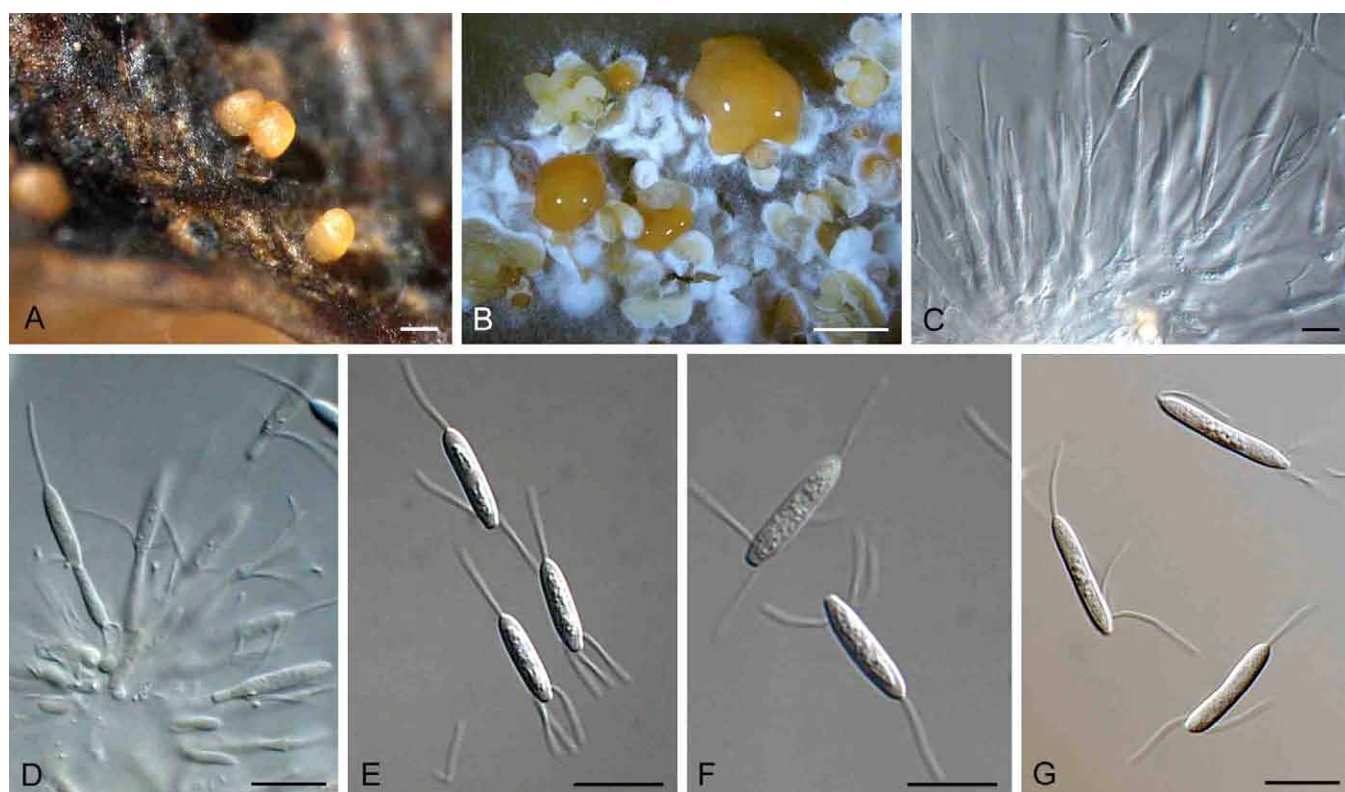


Fig. 9. *Mycotribulus mirabilis* (CBS 138016). **A.** Conidiomata on *Eucalyptus* leaf *in vivo*. **B.** Conidiomata forming on PDA. **C–D.** Conidiogenous cells giving rise to conidia. **E–G.** Conidia. Bars: A = 300 μ m, B = 250 μ m, all others = 10 μ m.

Associated with leaf litter of *Eucalyptus* spp. *Conidiomata* pycnidoid, separate, subepidermal, exuding a pale yellow conidial cirrus; subglobose, to 250 μ m wide, and 300 μ m high, unilocular, often irregularly lobed, opening by irregular rupture of apical wall, 20–30 μ m thick, of brown *textura angularis*, becoming hyaline towards centrum. *Paraphyses* hyaline, smooth, branched or not, septate, 15–100 \times 1–3 μ m; apex irregularly curved to lobed. *Conidiophores* 0–2-septate, unbranched or branched below, 10–20 \times 3–4 μ m, hyaline, smooth, subcylindrical. *Conidiogenous cells* subcylindrical, terminal and lateral, hyaline, smooth, 8–17 \times 1.5–2.5 μ m. *Conidia* naviculate to fusiform, tapering to acutely rounded apex, and truncate base, aseptate, smooth, guttulate, (9–) 13–15(–18) \times (2.5–)3(–3.5) μ m, bearing a single tubular, filiform, flexuous apical appendage, 7–12 μ m long; basal appendages (2–5) lateral, slightly above truncate base, unbranched, divergent, straight to flexuous, 8–12 μ m long.

Culture characteristics: Colonies spreading, flat, reaching 55 mm diam after 2 wk at 25 $^{\circ}$ C, with sparse aerial mycelium and feathery margins. On OA, MEA and PDA surface and reverse buff to dirty white.

Specimens examined: **India:** Karnataka State: Balehonnur, Coffee Research Station, on rotting leaves of *Eucalyptus* sp., 12 Nov. 1963, T.R. Nag Raj (K (M) IMI 128041 – holotype; DAOM 124817 – isotype). – **Venezuela:** Caracas: on leaves of *Eucalyptus camaldulensis*, 4 Oct. 2006, M.J. Wingfield (cultures CPC 13390–13392). – **China:** Guangdong: on leaves of *Eucalyptus urophylla*, 18 Jun. 2007, C. Mai & X. Zhao (CBS H-21732 – **epitype designated here**, MBT178283; cultures ex-epitype CPC 14167 = CBS 138016, CPC 14168).

Notes: The genus *Mycotribulus* is one of the few coelomycete genera confirmed within the *Basidiomycota* (*Physalacriaceae*, *Agaricales* according to Rungjindamai *et al.* 2008) and is presently monotypic. Isolates are commonly associated with *Eucalyptus*, but the species can also occur on other hosts such as *Apodytes abbotii*, *Mangifera indica* and *Syzygium cordatum* (Crous 1993, Marincowitz *et al.* 2010). The LSU sequence of two strains of *Mycotribulus* from *Eucalyptus pellita* \times *brassiana* in Indonesia (this study) and *E. camaldulensis* in Thailand (BCC13341, GenBank accession EF589740, Rungjindamai *et al.* 2008), respectively, differed in their LSU sequence from *M. mirabilis* (Fig. 1) and might represent a second *Mycotribulus* species. Unfortunately no ITS sequence of BCC13341 was available for comparison.

Authors: P.W Crous and D.A. Giraldo López

ACKNOWLEDGEMENTS

We thank the technical staff, Arien van Iperen (cultures), Marjan Vermaas (photographic plates), and Mieke Starink-Willemse (DNA isolation, amplification and sequencing) for their invaluable assistance. Thippawan Trakunyingcharoen acknowledges financial support from the Royal Golden Jubilee Ph.D. Programme (Grant No. PHD/0353/2552). Alejandra Giraldo López is grateful for the financial support received from the Spanish Ministerio de Economía y Competitividad, grant CGL 2011-27185. Conrad L. Schoch and Barbara Robbertse acknowledge support from the Intramural Research Program of the NIH, National Library of Medicine.

REFERENCES

- Andrianova TV, Minter TW (2007) New species of *Bartalinia* and *Septoriella* from the Altai Mountains (Russia). *Mycotaxon* **101**: 297–313.
- Arx JA von (1973) Centraalbureau voor Schimmelcultures Baarn and Delft. Progress Reports 1972. *Verhandelingen der Koninklijke Nederlandsche Akademie van Wetenschappen, Afdeling Natuurkunde* **61**: 59–81.
- Arx JA von (1981) *The Genera of Fungi Sporulating in Pure Culture*. 3rd edn. Vaduz: J. Cramer.
- Aveskamp MM, Gruyter H de, Woudenberg JHC, Verkley GJM, Crous PW (2010) Highlights of the *Didymellaceae*: A polyphasic approach to characterise *Phoma* and related pleosporalean genera. *Studies in Mycology* **65**: 1–60.
- Braun U (1995) *A monograph of Cercospora, Ramularia and allied genera (Phytopathogenic Hyphomycetes)*. Vol. 1. Eching: IHW-Verlag.
- Chaverri P, Salgado C, Hirooka Y, Rossman AY, Samuels GJ (2011) Delimitation of *Neonectria* and *Cylindrocarpon* (*Nectriaceae*, *Hypocreales*, *Ascomycota*) and related genera with *Cylindrocarpon*-like anamorphs. *Studies in Mycology* **68**: 57–78.
- Cheewangkoon R, Crous PW, Hyde KD, Groenewald JZ, To-anan C (2008) Species of *Mycosphaerella* and related anamorphs on *Eucalyptus* leaves from Thailand. *Persoonia* **21**: 77–91.
- Clements FE, Shear CL (1931) *The Genera of Fungi*. New York: H.W. Wilson.
- Crous PW (1993) New and interesting fungi. 13. Foliicolous microfungi. *South African Journal of Botany* **59**: 602–610.
- Crous PW, Gams W, Stalpers JA, Robert V, Stegehuis G (2004) MycoBank: an online initiative to launch mycology into the 21st century. *Studies in Mycology* **50**: 19–22.
- Crous PW, Groenewald JZ (2005) Hosts, species and genotypes: opinions versus data. *Australasian Plant Pathology* **34**: 463–470.
- Crous PW, Schoch CL, Hyde KD, Wood AR, Gueidan C, et al. (2009a) Phylogenetic lineages in the *Capnodiales*. *Studies in Mycology* **64**: 17–47.
- Crous PW, Slippers B, Wingfield MJ, Rheeder J, Marasas WFO, et al. (2006) Phylogenetic lineages in the *Botryosphaeriaceae*. *Studies in Mycology* **55**: 235–253.
- Crous PW, Verkley GJM, Christensen M, Castañeda-Ruiz RF, Groenewald JZ (2012) How important are conidial appendages? *Persoonia* **28**: 126–137.
- Crous PW, Verkley GJM, Groenewald JZ, Samson RA (eds) (2009b) *Fungal Biodiversity*. [CBS Laboratory Manual Series no.1.] Utrecht: CBS-KNAW Fungal Biodiversity Centre.
- Crous PW, Wingfield MJ, Guarro J, Cheewangkoon R, van der Bank M, et al. (2013) Fungal Planet description sheets: 154–213. *Persoonia* **31**: 188–296.
- Crous PW, Wingfield MJ, Park RF (1991) *Mycosphaerella nubilosa* a synonym of *M. molleriana*. *Mycological Research* **95**: 628–632.
- Fonseka RN (1960) The morphology of *Chaetosporium chaetosporum*. *Transactions of the British Mycological Society* **43**: 631–636.
- Gangadevi V, Muthumary J (2008) Taxol, an anticancer drug produced by an endophytic fungus *Bartalinia robillardoides* Tassi, isolated from a medicinal plant, *Aegle marmelos* Correa ex Roxb. *World Journal of Microbiology and Biotechnology* **24**: 717–724.
- Gräfenhan T, Schroers H-J, Nirenberg HI, Seifert KA (2011) An overview of the taxonomy, phylogeny, and typification of nectriaceous fungi in *Cosmospora*, *Acremonium*, *Fusarium*, *Stilbella*, and *Volutella*. *Studies in Mycology* **68**: 79–113.
- Gryganskiy AP, Humber RA, Smith ME, Hodge K, Huang B, Voigt K, Vilgalys R (2013) Phylogenetic lineages in *Entomophthoromycota*. *Persoonia* **30**: 94–105.
- Hawksworth DL (2011) A new dawn for the naming of fungi: impacts of decisions made in Melbourne in July 2011 on the future publication and regulation of fungal names. *IMA Fungus* **2**: 155–162.
- Hawksworth DL, Crous PW, Redhead SA, Reynolds DR, Samson RA, et al. (2011). The Amsterdam Declaration on Fungal Nomenclature. *IMA Fungus* **2**: 105–112.
- Hawksworth DL (2012) Managing and coping with names of pleomorphic fungi in a period of transition. *IMA Fungus* **4**: 53–56.
- Hebert PDN, Cywinska A, Ball SL, DeWaard JR (2003) Biological identifications through DNA barcodes. *Proceedings of the Royal Society of London B, Biological Sciences* **270**: 313–321.
- Hibbett DS, Binder M, Bischoff JF, Blackwell M, Cannon PF, et al. (2007) A higher-level phylogenetic classification of the *Fungi*. *Mycological Research* **111**: 509–547.
- Hibbett DS, Ohman A, Glotzer D, Nuhn M, Kirk P, Nilsson RH (2011) Progress in molecular and morphological taxon discovery in *Fungi* and options for formal classification of environmental sequences. *Fungal Biology Reviews* **25**: 38–47.
- Hirooka Y, Rossman AY, Samuels GJ, Lechat C, Chaverri P (2012) A monograph of *Allantonectria*, *Nectria*, and *Pleonectria* (*Nectriaceae*, *Hypocreales*, *Ascomycota*) and their pycnidial, sporodochial, and synnematosous anamorphs. *Studies in Mycology* **71**: 1–210.
- Höhnelt F von (1907) Fragmente zur Mykologie III. Mitteilung, Nr. 92 bis 155. *Sitzungsberichten der Kaiserliche Akademie der Wissenschaften in Wien Mathematische-naturwissenschaftliche Klasse* **116**: 83–162.
- Höhnelt F von (1918) Dritte vorläufige Mitteilung mykologischer Ergebnisse (Nr. 201–304). *Berichte der Deutschen Botanischen Gesellschaft* **36**: 309–317.
- Höhnelt F von (1924) Über die Gattung *Chaetosporium* Sacc. *Mitteilungen aus dem Botanischen Institut der Technischen Hochschule in Wien* **3**: 86–88.
- Hoog GS de, Gerrits van den Ende AHG (1998). Molecular diagnostics of clinical strains of filamentous Basidiomycetes. *Mycoses* **41**: 183–189.
- Kirk PM, Cannon PF, Minter DW, Stalpers JA (2008) *Ainsworth & Bisby's Dictionary of the Fungi*. 10th edn. Wallingford: CAB International.
- Kirk PM, Stalpers JA, Braun U, Crous PW, Hansen K, et al. (2013) A without-prejudice list of generic names of fungi for protection under the *International Code of Nomenclature for algae, fungi and plants*. *IMA Fungus* **4**: 381–443.
- Kirschner R, Oberwinkler F (2009) Supplementary notes on *Basidiopycnis hyalina* (*Basidiomycota*, *Atractiellales*) and its anamorph. *Mycotaxon* **109**: 29–38.
- Marincowitz S, Gryzenhout M, Wingfield MJ (2010) New and rare coelomycetes with appendage-bearing conidia from Pondoland, South Africa. *Mycotaxon* **111**: 309–322.
- Mathur PN, Thirumalachar J (1959) Studies on some Indian soil fungi I. Some new or noteworthy *Sphaeropsidales*. *Sydowia* **13**: 143–147.
- Minnis AM, Kennedy AH, Grenier DB, Palm ME, Rossman AY (2012) Phylogeny and taxonomic revision of the *Planistromellaceae* including its coelomycetous anamorphs: contributions towards

- a monograph of the genus *Kellermania*. *Persoonia* **29**: 11–28.
- Miranda BEC, Barreto RW, Crous PW, Groenewald JZ (2012) *Pilidiella tibouchinae* sp. nov. associated with foliage blight of *Tibouchina granulosa* (quaresmeira) in Brazil. *IMA Fungus* **3**: 1–7.
- Nag Raj TR (1975) Genera coelomycetum. XI. *Hyalotoa*, *Hyalotiella* and *Hyalotiopsis*. *Canadian Journal of Botany* **53**: 1615–1624.
- Nag Raj TR (1979) Genera coelomycetum XVII. New anamorph genera: *Libartania* and *Plectronidiopsis*. *Canadian Journal of Botany* **57**: 1389–1397.
- Nag Raj TR (1993) *Coelomycetous Anamorphs with appendage bearing conidia*. Waterloo, ON: Mycologue Publications.
- Nag Raj TR, DiCosmo F (1984) Genera coelomycetum. XXII. *Amphiciliella*, *Choanatiara* anam.-gen. nov., *Ciferriella*, *Cymbothyrium*, *Melanostroma*, *Phialophorophoma* and *Thyrsidiana*. *Canadian Journal of Botany* **62**: 709–721.
- Niekerk JM van, Groenewald JZ, Verkley GJM, Fourie PH, Wingfield MJ, Crous PW (2004) Systematic reappraisal of *Coniella* and *Pilidiella*, with specific reference to species occurring on *Eucalyptus* and *Vitis* in South Africa. *Mycological Research* **108**: 283–303.
- Patouillard MN (1888) Note sur une Tubercularée graminicole. *Bulletin de la Société Mycologique de France* **4**: 39–40.
- Petrak F (1960) Ergebnisse einer Revision der Grundtypen verschiedener Gattungen der Askomyzeten und Fungi imperfecti. *Sydowia* **14**: 347–354.
- Petrak F, Sydow H (1927) Die Gattungen der Pyrenomyzeten, Sphaeropsideen und Melanconieen. I. Der phaeosporen Sphaeropsideen und die Gattung *Macrophoma*. *Feddes Repertorium Speciarum Novarum Regni Vegetabilium Beihefte* **42**: 1–551.
- Phillips AJL, Alves A, Abdollahzadeh J, Slippers B, Wingfield MJ, et al. (2013) The *Botryosphaeriaceae*: genera and species known from culture. *Studies in Mycology* **76**: 51–167.
- Quaedvlieg W, Groenewald JZ, de Jesús Yáñez-Morales M, Crous PW (2012) DNA barcoding of *Mycosphaerella* species of quarantine importance to Europe. *Persoonia* **29**: 101–115.
- Quaedvlieg W, Verkley GJM, Shin H-D, Barreto RW, Alfenas AC, et al. (2013). Sizing up *Septoria*. *Studies in Mycology* **75**: 307–390.
- Rajeshkumar KC, Singh PN, Yadav LS, Swami SV, Singh SK (2010) *Chaetospermum setosum* sp. nov. from the Western Ghats, India. *Mycotaxon* **113**: 397–404.
- Rayner RW (1970) *A Mycological Colour Chart*. Kew: Commonwealth Mycological Institute.
- Rossmann AY, Farr DF, Castlebury LA (2007) A review of the phylogeny and biology of the *Diaporthales*. *Mycoscience* **48**: 135–144.
- Rungjindamai N, Sakayaroj J, Plaingam N, Somrithipol S, Jones EBG (2008) Putative teleomorphs of the coelomycete genera *Chaetospermum*, *Guilia* and *Mycotribulus* based on nuclear large and small subunit rDNA. *Mycological Research* **112**: 802–810.
- Saccardo PA (1892) *Sylloge Fungorum*. Vol 10. Padova: P.A. Saccardo.
- Schmitt I, Crespo A, Divakar PK, Fankhauser JD, Herman-Sackett E, et al. (2009) New primers for single-copy genes in fungal phylogenetics and systematics. *Persoonia* **23**: 35–40.
- Schoch CL, Robbertse B, Robert V, Vu D, Cardinali G et al. (2014) Finding needles in haystacks: linking scientific names, reference specimens and molecular data for Fungi. *Database*: in press.
- Schoch CL, Seifert KA, Huhndorf S, Robert V, Spouge JL, et al. (2012) Nuclear ribosomal internal transcribed spacer (ITS) region as a universal DNA barcode marker for Fungi. *Proceedings of the National Academy of Sciences, USA* **109**: 6241–6246.
- Schroers H-J, Gräfenhan T, Nirenberg HI, Seifert KA (2011) A revision of *Cyanonectria* and *Geejayessia* gen. nov., and related species with *Fusarium*-like anamorphs. *Studies in Mycology* **68**: 115–138.
- Sigler L (1990) Occurrence of a yeast-like synanamorph in the fungicolous coelomycete *Eleutheromyces subulatus*. *Cryptogamic Botany* **1**: 384–389.
- Slippers B, Boissin E, Phillips AJL, Groenewald JZ, Wingfield MJ, et al. (2013) Phylogenetic lineages in the *Botryosphaeriales*: a systematic and evolutionary framework. *Studies in Mycology* **76**: 31–49.
- Smith AL, Ramsbottom J (1914) New or rare fungi. *Transactions of the British Mycological Society* **4**: 318–330.
- Smith H, Wingfield MJ, Crous PW, Coutinho TA (1996) *Sphaeropsis sapinea* and *Botryosphaeria dothidea* endophytic in *Pinus* spp. and *Eucalyptus* spp. in South Africa. *South African Journal of Botany* **62**: 86–88.
- Subramanian CV, Ramakrishnan K (1954) *Alpakesa*, a new genus of the *Sphaeropsidales*. *Journal of the Indian Botanical Society* **33**: 203–205.
- Sutton BC (1969) Type studies of *Coniella*, *Anthasthoopa*, and *Cyclodomella*. *Canadian Journal of Botany* **47**: 603–608.
- Sutton B (1977) Coelomycetes VI. Nomenclature of generic names proposed for Coelomycetes. *Mycological Papers* **141**: 1–253.
- Sutton BC (1980) *The Coelomycetes: fungi imperfecti with pycnidia, acervuli, and stromata*. Kew: Commonwealth Mycological Institute.
- Sutton BC, Alcorn JL (1985) Undescribed species of *Crinitospora* gen. nov., *Massariothea*, *Mycoleptodiscus* and *Neottiosporina* from Australia. *Transactions of the British Mycological Society* **84**: 437–445.
- Tanaka K, Endo M, Hirayama K, Okane I, Hosoya T, Sato T (2011) Phylogeny of *Discosia* and *Seimatosporium*, and introduction of *Adisco* and *Immersidisco* genera nova. *Persoonia* **26**: 85–98.
- Taylor JW, Jacobson DJ, Kroken S, Kasuga T, Geiser DM, et al. (2000) Phylogenetic species recognition and species concepts in fungi. *Fungal Genetics and Biology* **31**: 21–32.
- Tretter ED, Johnson EM, Wang Y, Kandel P, White MM (2013) Examining new phylogenetic markers to uncover the evolutionary history of early-diverging fungi: comparing MCM7, TSR1 and rRNA genes for single- and multi-gene analyses of the *Kickxellomycotina*. *Persoonia* **30**: 106–125
- Tsuneda A, Murakami S, Gill WM, Maekawa N (1997) Black spot disease of *Lentinula edodes* caused by the *Hyphozyma* synanamorph of *Eleutheromyces subulatus*. *Mycologia* **89**: 867–875.
- Vilgalys R, Hester M (1990) Rapid genetic identification and mapping of enzymatically amplified ribosomal DNA from several *Cryptococcus* species. *Journal of Bacteriology* **172**: 4238–4246.
- Wells K (1975). Studies of some *Tremellaceae*. V. A new genus, *Efibulobasidium*. *Mycologia* **67**: 147–156.
- Wells K, Bandoni RJ (2001) *Heterobasidiomycetes*. In: *The Mycota*. Vol. VII Part B. *Systematics and Evolution* (McLaughlin DJ, McLaughlin EG, Lemke PA, eds): 85–120. Berlin: Springer-Verlag.

- White TJ, Bruns T, Lee J, Taylor SB (1990) Amplification and direct sequencing of fungal ribosomal RNA genes for phylogenetics. In: *PCR Protocols: a guide to methods and applications* (Innis MA, Gelfand DH, Sninsky JJ, White TJ, eds): 315–322. San Diego: Academic Press.
- Wingfield MJ, De Beer ZW, Slippers B, Wingfield BD, Groenewald JZ, *et al.* (2012) One fungus, one name promotes progressive plant pathology. *Molecular Plant Pathology* **13**: 604–613.
- Woudenberg JHC, Groenewald JZ, Binder M, Crous PW (2013) *Alternaria* redefined. *Studies in Mycology* **75**: 171–212.